

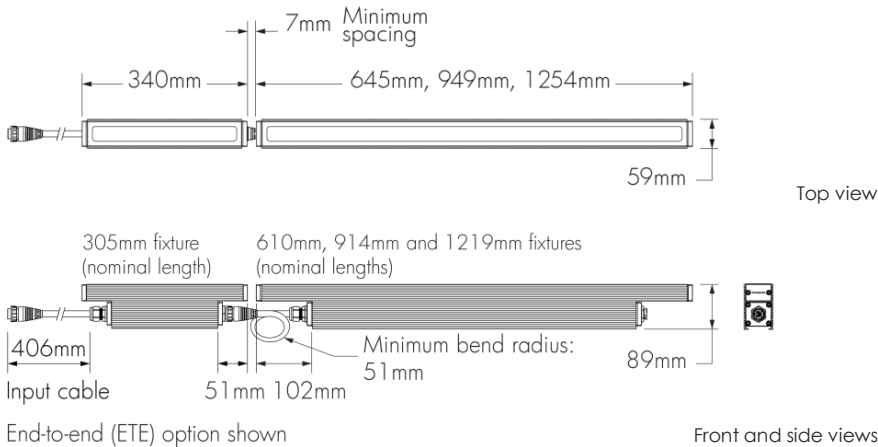
Project Name

Type 

F1

 Catalog / Part Number

Qty



Photometric Summary

	Delivered output (lm)	Intensity (peak cd)
WW	2,583	3,714
8°x8°	2,943	56,085
10°x10°	2,757	27,609
10°x30°	2,797	21,640
10°x60°	2,868	12,770
10°x90°	2,591	5,686
15°x25°	2,840	17,806
30°x30°	2,761	10,603
30°x60°	2,771	3,676
35°x35°	2,822	7,199
50°x80°	2,709	2,483
60°x60°	2,473	2,165
80°x80°	2,794	1,822
90°x90°	2,583	1,358

Based on DWH full output, 4ft [1219mm], DMX/RDM configuration.  
Photometric performance is measured in compliance with IESNA LM-79-08.

	Delivered output (lm)	Intensity (peak cd)	Power (W)	CCT* (K)
Dim to Warm via 0-10V DIM/DTW				
Dim to Warm via DMX/RDM Single channel control (DMX/RDM1)				
DWW	2,309	10,281	50	2,700
DMX/RDM 3-channel control (DMX/RDM)				
DWW	2,428	10,810	61	4,000
DWH	2,868	12,770	61	2,600

Based on 4ft [1219mm], 10°x60° configuration.  
\*Tested at full output.

Description

The Lumenfacade Dynamic White is a high-performance linear LED luminaire for grazing or flood lighting, with a special feature that enables the selection of any colour temperature from 2200K to 3000K or from 2700K to 6500K. Featuring second generation LED technology, the luminaire is available in 305 mm, 610 mm, 914 mm or 1219 mm sections, and offers a number of options, including: a choice of optics, mounting options, finishes, accessories and controls. A unique asymmetric wallwash distribution is also available, providing exceptional uniformity and brightness for walls and signage.

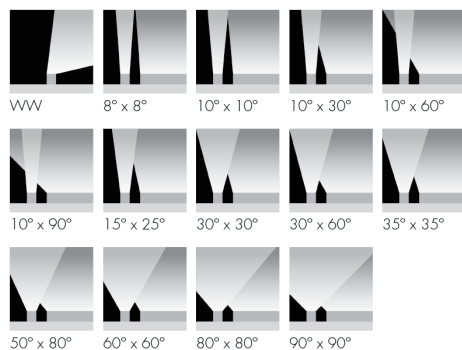
Features

Colour and Colour Temperature	Dynamic warm white (2200K to 3000K), Dynamic white (2700K to 6500K)
Length (nominal)	305 mm, 610 mm, 914 mm, 1219 mm
Optics	Asymmetric Wallwash, 8° x 8°, 10° x 10°, 10° x 30°, 10° x 60°, 10° x 90°, 15° x 25°, 30° x 30°, 30° x 60°, 35° x 35°, 50° x 80°, 60° x 60°, 80° x 80°, 90° x 90°
Options	End-to-end configuration (factory installed 16 in black input cable included), Corrosion-resistant coating for hostile environments, 3G ANSI C136.31-2010 Vibration Rating for bridge applications, CE (certification covers European Economic Area)
Power Consumption	56.59 W/m, Typically 20% higher for 305 mm fixture lengths
Warranty	5-year limited warranty
Performance	
Illuminance at Distance	Minimum 1 fc at 34.4 m (1219 mm fixture, DWH full output, 10° x 60°, DMX/RDM)
Lumen Maintenance	L70 280,000 hrs, L95 35,000 hrs

Physical

Housing Material	Low copper content extruded aluminium
------------------	---------------------------------------

## Optics



## Colours and Colour Temperatures



## Controls

DIM/DTW    DMX/RDM1    DMX/RDM

lumen talk™

## Ratings

IP66    IK07\*

\*asymmetric wallwash lens is IK06 rated

## Certifications



<b>Lens Material</b>	Clear tempered glass
<b>Hardware Material</b>	Stainless steel
<b>End Cap Material</b>	Machined aluminium
<b>Gasket Material</b>	Silicone
<b>Surface Finish</b>	Electrostatically applied polyester powder coat
<b>Weight</b>	305 mm: 2.04 kg, 610 mm: 3.18 kg, 914 mm: 4.76 kg, 1219 mm: 6.35 kg

## Electrical and control

<b>Voltage</b>	100 to 277 volts, 347 volts available (consult factory for details)
<b>Fixture Cable</b>	Power and data in one cable, End-to-end option (ETE): 406 mm black input cable (no jumper cable needed for minimum spacing between two fixtures)
<b>Leader Cable Conductor</b>	5C #16-5
<b>Control</b>	Lumentalk, Dim to Warm via 0-10V (2700K to 2200K), Dim to Warm via single-channel DMX/RDM (2700K to 2200K), DMX/RDM enabled 3-channel colour temperature control
<b>Resolution (DMX/RDM)</b>	Per foot or per fixture (configured with LumenID V3 software), 8-bit or 16-bit

<b>Dynamic Warm Colour Temperature Mixing</b>	12 LEDs per 305 mm (4x 2200K, 4x 2700K, 4x 3000K)
<b>Dynamic White Colour Temperature Mixing</b>	12 LEDs per 305 mm (4x 2700K, 4x 4000K, 4x 6500K)

## Environmental

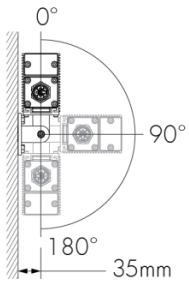
<b>Storage Temperature</b>	-40 °C to 85 °C (device must reach start-up temperature value before operating)
<b>Start-up Temperature</b>	-25 °C to 50 °C
<b>Operating Temperature</b>	-40 °C to 50 °C
<b>Ingress Protection Rating</b>	IP66, Wet location rated
<b>Impact Resistance Rating</b>	IK07 (asymmetric wallwash lens is IK06 rated)

## Accessories (order separately)

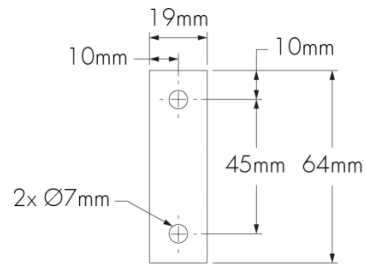
<b>Optical Accessories</b>	Lumenfacade Radial Louvre
<b>Cables</b>	Leader cable (standard), Jumper cable (standard), Leader cable (ETE), Jumper cable (ETE)
<b>Control Boxes</b>	DMX/RDM enabled (daisy chain or star configuration), Ethernet enabled (daisy chain or star configuration), Lumentalk Data Bridge
<b>Control Systems</b>	Lumentone™ 2, Pharos® kit
<b>Diagnostic and Addressing Tools</b>	LumenID, LumentalkID

## Wall Mount

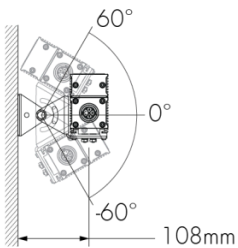
### UMAS - Universal Adjustable Mounting



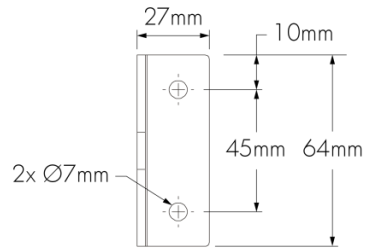
### UMAS - Mounting hole pattern



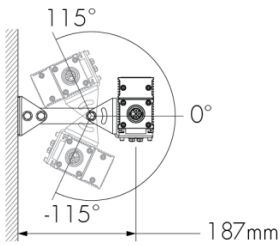
### WAM2 - Adjustable Wall Mounting 51 mm



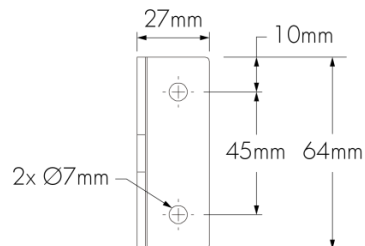
### WAM2 - Mounting hole pattern



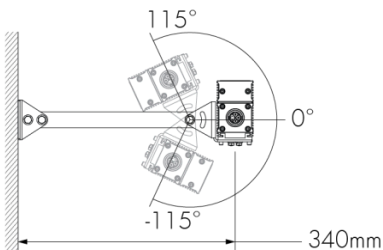
### WAM6 - Adjustable Extended Arm Mounting 152 mm



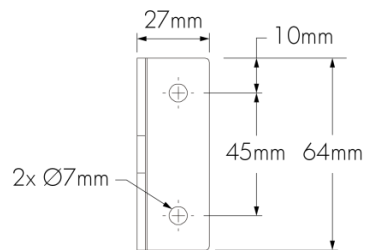
### WAM6 - Mounting hole pattern



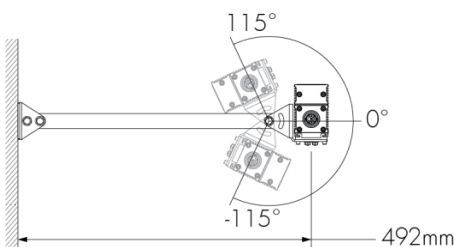
### WAM12 - Adjustable Extended Arm Mounting 305 mm



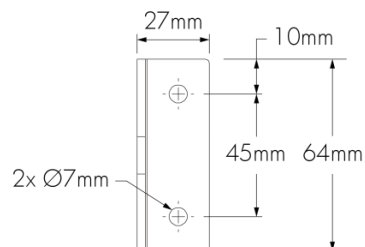
### WAM12 - Mounting hole pattern



### WAM18 - Adjustable Extended Arm Mounting 457 mm



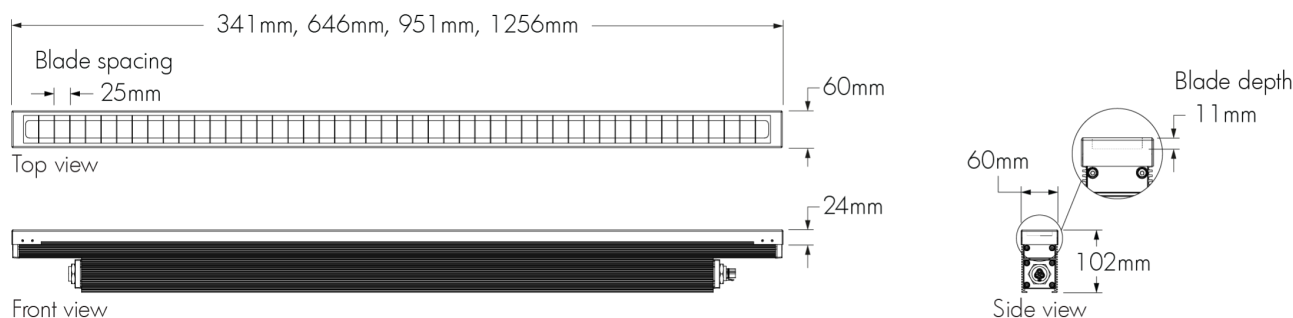
### WAM18 - Mounting hole pattern



**End-to-end configuration option (ETE)**

- A** - ETE leader cable (order separately)  
**B** - Lumenfacade with ETE option  
**C** - ETE 406 mm black input cable (minimum bend radius: 51 mm)  
**D** - ETE jumper cable (order separately)

Includes a factory installed 406 mm black input cable. A jumper cable is not required for minimum spacing between two end-to-end (ETE) fixtures. An ETE jumper cable is required only if a longer distance between two adjacent ETE fixtures is needed, or to connect two continuous runs of ETE fixtures together.



**Optical accessories (order separately)****LOGRD - Radial louvre for Lumenfacade****LOGRD-LENGTH-FINISH-OPTIONS**

Please specify:



**LENGTH:** 305 mm, 610 mm, 914 mm or 1219 mm; **FINISH:** BK - Black Sandtex®, BRZ - Bronze Sandtex®, SI - Silver Sandtex®, WH - Smooth white or CC - custom colour and finish (please specify RAL colour); **OPTIONS:** CRC - Corrosion-resistant coating for hostile environments

- The addition of a louvre will affect beam distribution. Consult factory for application support.
- Not suitable for asymmetric wallwash optic.

**EPA Guide****Fixture**

	LOG 305 mm	LOG 610 mm	LOG 914 mm	LOG 1219 mm
<b>EPA front (m²)</b> 	0.0255	0.0538	0.091	0.1288
<b>EPA side (m²)</b> 	0.0037	0.0038	0.0041	0.0044

**Fixture with radial louvre accessory**

	LOG 305 mm	LOG 610 mm	LOG 914 mm	LOG 1219 mm
<b>EPA front (m²)</b> 	0.0299	0.0609	0.1056	0.1598
<b>EPA side (m²)</b> 	0.0042	0.0043	0.0049	0.0051

**Cables (order separately)****LOGLC - Leader cable for Lumenfacade**

Standard construction

LOGLC-CERTIFICATION-STD-LENGTH-CABLE COLOUR



End-to-end (ETE) option

LOGLC-CERTIFICATION-ETE-LENGTH-CABLE COLOUR

Please specify:

**CERTIFICATION:** UL or CE; **LENGTH:** 3 m, 7.6 m, 15.2 m, 30.5 m, 45.7 m or 61 m; **CABLE COLOUR:** black or white (connectors are black as standard; ETE fixture input cables are black as standard)

- Suitable for dimming/data and non-dimming applications.
- Sealing end cap is mandatory for any unused connector. One (1) included with every leader cable.
- Consult Lumenfacade leader cable specification sheet for details.

**LOGJC - Jumper cable for Lumenfacade**

Standard construction

LOGJC-CERTIFICATION-STD-LENGTH-CABLE COLOUR



End-to-end (ETE) option

LOGJC-CERTIFICATION-ETE-LENGTH-CABLE COLOUR

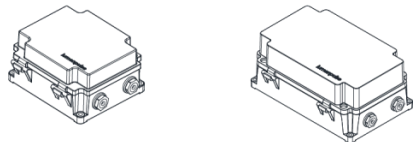
Please specify:

**CERTIFICATION:** UL or CE; **LENGTH:** 0.3 m (available for ETE option only), 0.6 m to 9.1 m (available in 0.3 m increments) or 15.2 m; **CABLE COLOUR:** black or white (connectors are black as standard; ETE fixture input cables are black as standard)

- Suitable for dimming/data and non-dimming applications.
- Consult Lumenfacade jumper cable specification sheet for details.

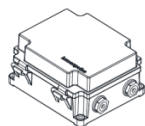
## Control boxes (order separately)

### CBX-DMX/RDM - DMX/RDM enabled (daisy chain or star configuration)



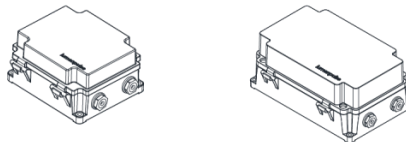
DMX/RDM control box. Up to six power and data outputs to fixtures or fixture runs. Consult CBX specification sheet and installation instructions for details. Lumenterminators provided with CBX (2x for daisy chain configuration, 6x for star configuration), consult factory to order spares.

### LDB - Lumentalk Data Bridge



Lumentalk Data Bridge, 0-10V or DMX output. Consult LDB specification sheet for details.

### CBX-ENET - Ethernet enabled (daisy chain or star configuration)



Ethernet control box. Up to four power and data outputs to fixture or fixture runs. Consult Ethernet CBX specification sheet and installation instructions for details.

## Control systems (order separately)

### LTN2 - Lumentone™ 2



Lumentone 2 is a simple pre-programmed DMX 512 controller with a push button rotary dial and live feedback.

### PHAROS - Pharos® kit



The Pharos kit, available for 1 or 2 DMX universes, allows for complete control of large lighting installations. 2 DMX universes kit shown.

## Diagnostic and addressing tools (order separately)

### LID - LumenID



LumenID is a diagnostic and addressing DMX/RDM tool. It must be specified on all DMX applications. Consult LID specification sheet for details.

### LID-LT - LumentalkID

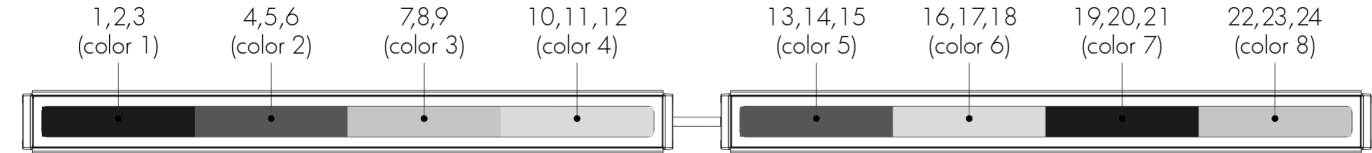


LumentalkID is a diagnostic and addressing tool. It must be specified for all Lumentalk (LT) applications. Consult LID-LT specification sheet for details.

Resolution details

DMX/RDM control, resolution per foot: each 305 mm section is addressed independently

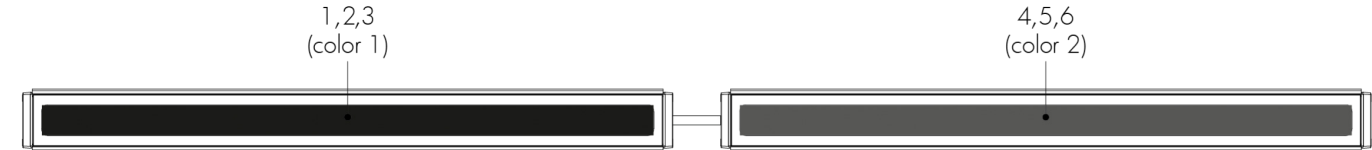
DMX addresses:



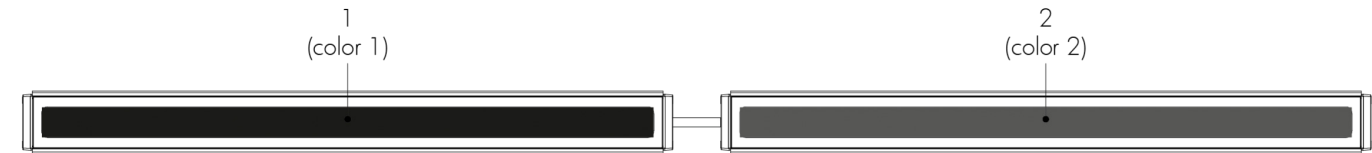
DMX/RDM control option

DMX/RDM control, resolution per fixture: each fixture is addressed independently

DMX addresses:



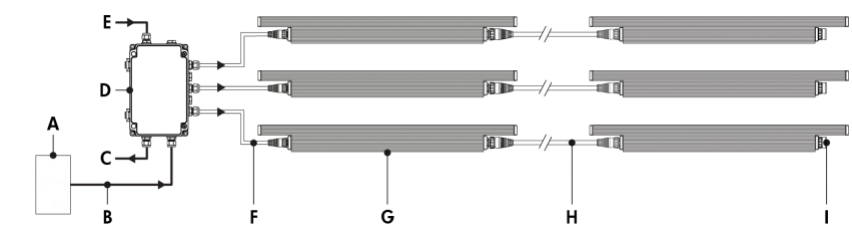
DMX/RDM control option



DMX/RDM1 control option

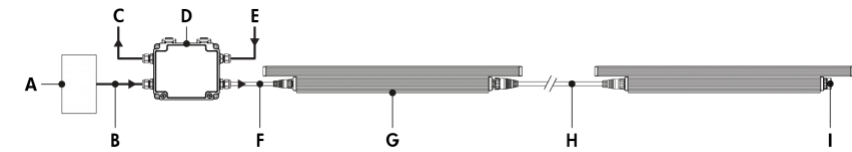
- 1219 mm fixtures shown.
- Applicable for DMX/RDM and DMX/RDM1 control options only. Fixture resolution can be configured on-site within the LumenID V3 software. A DMX/RDM enabled CBX is required.

Star Layout (Dim to Warm via DMX/RDM1\* or 3-channel DMX/RDM)  
\*Available for DWW version only, 2700K to 2200K



- A - DMX/RDM controller (order separately from Lumenpulse, or by others)
- B - Data input (Belden 9841 or equivalent, by others)
- C - Data output to next CBX (optional, not isolated/not boosted)
- D - CBX-ST
- E - Power input (100-277V, wiring by others)
- F - Leader cable (LOGLC)
- G - Lumenfacade
- H - Jumper cable (LOGJC)
- I - Sealing end cap

Daisy Chain Layout (Dim to Warm via DMX/RDM1\* or 3-channel DMX/RDM)  
\*Available for DWW version only, 2700K to 2200K



- A - DMX/RDM controller (order separately from Lumenpulse, or by others)
- B - Data input (Belden 9841 or equivalent, by others)
- C - Data output to next CBX (optional, not isolated/not boosted)
- D - CBX-DS
- E - Power input (100-277V, wiring by others)
- F - Leader cable (LOGLC)
- G - Lumenfacade
- H - Jumper cable (LOGJC)
- I - Sealing end cap

Maximum Run of Fixtures, Lumenfacade® LOG Dynamic White 56.59 W/m

Voltage	120V	240V	277V
Maximum Run of Fixtures*	21m	24m	27m

Based on 15A maximum, 15.2m leader cable.  
\*Example: 120V = 21m maximum run of end to end fixtures (17 fixtures maximum for 1254mm LOG).

Based on 15A maximum, 15.2 m leader cable.

- Consult CBX installation instructions for additional wiring details.
- Consult factory for specific applications and maximum fixture count/cable length recommendations. Maximum run length calculations are typically based on 1219 mm fixtures.
- The DMX/RDM protocol states a maximum of 32 DMX/RDM enabled fixtures on any single run.
- Maximum of 4 DMX/RDM repeaters/CBX cascading in line.
- Maximum of 6 outputs per CBX-ST; maximum of 1 output per CBX-DS.
- DMX/RDM1 control option requires 1 DMX address. DMX/RDM control option requires 3 DMX addresses.
- 56.59 W/m.



How to order

Housing <sup>(1)</sup>	Voltage <sup>(2)</sup>	Length	Colour and Colour Temperature	Optics	Mounting Options	Finish	Control	Options
<b>LOG</b> Lumenfacade™	<b>100</b> 100 volts <b>120</b> 120 volts <b>208</b> 208 volts <b>220</b> 220 volts <b>240</b> 240 volts <b>277</b> 277 volts	<b>12</b> 340 mm (2.04 kg) <sup>(1)</sup> <sup>(3)</sup> <b>24</b> 645 mm (3.18 kg) <b>36</b> 949 mm (4.76 kg) <b>48</b> 1254 mm (6.35 kg)	<b>DWW</b> Dynamic warm white (2200K to 3000K) <b>DWH</b> Dynamic white (2700K to 6500K)	<b>WWLF</b> Asymmetric Wallwash, left feed  <b>WWRF</b> Asymmetric Wallwash, right feed  <b>8x8</b> 8° x 8° <sup>(4)</sup> <b>10x10</b> 10° x 10° <sup>(4)</sup>  <b>10x30</b> 10° x 30°  <b>10x60</b> 10° x 60°  <b>10x90</b> 10° x 90°  <b>15x25</b> 15° x 25°  <b>30x30</b> 30° x 30°  <b>30x60</b> 30° x 60°  <b>35x35</b> 35° x 35°  <b>50x80</b> 50° x 80°  <b>60x60</b> 60° x 60°  <b>80x80</b> 80° x 80°  <b>90x90</b> 90° x 90°	<b>SAM</b> Slim Adjustable Mounting  <b>UMP</b> Fixed Mounting <sup>(5)</sup>  <b>UMAS</b> Universal Adjustable Mounting <sup>(5)</sup>  <b>WAM2</b> Adjustable Wall Mounting 51 mm  <b>WAM6</b> Adjustable Extended Arm Mounting 152 mm  <b>WAM12</b> Adjustable Extended Arm Mounting 305 mm  <b>WAM18</b> Adjustable Extended Arm Mounting 457 mm	<b>BK</b> Black Sandtex®  <b>BRZ</b> Bronze Sandtex®  <b>SI</b> Silver Sandtex®  <b>WH</b> Smooth white  <b>CC</b> Custom colour and finish [please specify RAL colour] <sup>(4)</sup> <sup>(7)</sup> <sup>(8)</sup>	<b>LT</b> Lumentalk <sup>(3)</sup> <sup>(9)</sup> <sup>(10)</sup>  <b>DIM/DTW</b> Dim to Warm via 0-10V (2700K to 2200K) <sup>(11)</sup>  <b>DMX/RDM1</b> Dim to Warm via single-channel DMX/RDM (2700K to 2200K) <sup>(11)</sup> <sup>(12)</sup>  <b>DMX/RDM 3-channel colour</b> temperature control via DMX/RDM <sup>(12)</sup>	<b>ETE</b> End-to-end configuration (factory installed 16 in black input cable included)  <b>CRC</b> Corrosion-resistant coating for hostile environments <sup>(13)</sup> <sup>(14)</sup>  <b>3GV</b> 3G ANSI C136.31-2010 Vibration Rating for bridge applications <sup>(15)</sup>  <b>CE</b> CE (certification covers European Economic Area) <sup>(16)</sup>

- Notes:  
1. Power consumption is typically 20% higher for 305 mm fixture lengths.  
2. 347 volts available, consult factory for details.  
3. To connect 305 mm fixture lengths to the Lumentalk system, DMX/RDM must be specified as the control option, and a Lumentalk Data Bridge (LDB-DMX) is required. See the typical wiring diagrams in the specification sheet for details.  
4. For best results, we recommend a 152 mm setback from surface. Contact factory for application support.  
5. Suitable to use when 3GV option is specified.  
6. Lumenpulse offers a wide selection of RAL CLASSIC (K7) colours with a smooth texture and high-gloss finish. Please consult factory for a list of available K7 colours, other RAL textures and glosses, or to match alternate colour charts. Final colour matching results may vary.  
7. Setup charges apply for RAL colours. Consult factory for details.
8. Longer lead times can be expected for custom RAL colour finishes.  
9. Available for 610 mm, 914 mm and 1219 mm fixture lengths only.  
10. A Lumentranslator 2 (LTL2) and LumentalkID (LIDL2) must be specified for Lumentalk applications. Consult Lumentranslator 2 and Lumentalk pages and specification sheets for details.  
11. Available for DWW colour temperature option only.  
12. A control box (CBX) and LumenID (LID) must be specified.  
13. Use only when exposed to salt spray. This option is not required for normal outdoor exposure.  
14. Setup charges apply. Consult factory for details.  
15. Available with UMP and UMAS mounting options only.  
16. Consult European specification sheet and installation instructions for CE wiring information.