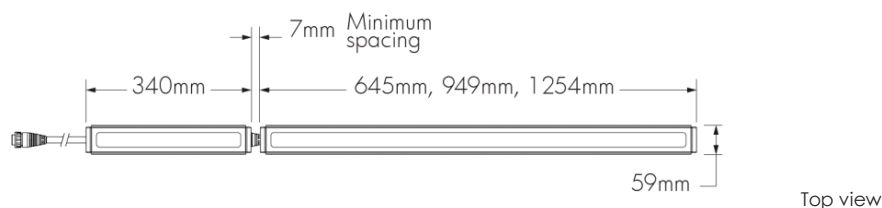
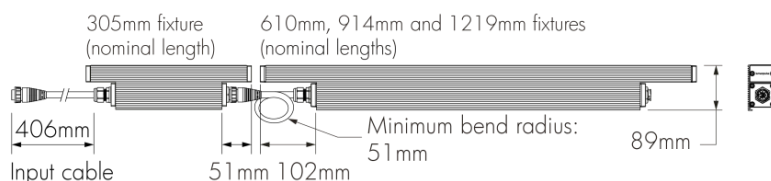


Project Name _____ Qty _____

Type **F3** Catalog / Part Number _____

Top view



End-to-end (ETE) option shown

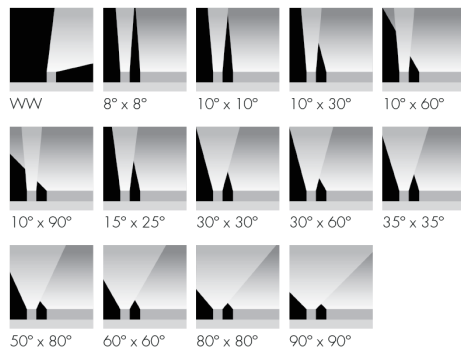
Front and side views

Photometric Summary

	Delivered output (lm)	Intensity (peak cd)
WW	2681	3856
8°x8°	3054	58,209
10°x10°	2862	28,655
10°x30°	2903	22,459
10°x60°	2980	13,266
10°x90°	2690	5902
15°x25°	2948	18,480
30°x30°	2865	11,004
30°x60°	2878	3819
35°x35°	2929	7473
50°x80°	2811	2577
60°x60°	2569	2250
80°x80°	2900	1890
90°x90°	2681	1409

Based on RGBW40K full output, 4ft [1219mm] DMX/RDM configuration.
Photometric performance is measured in compliance with IESNA LM-79-08.

Optics



Description

The Lumenfacade Colour Changing is a high-performance linear LED luminaire designed for grazing or floodlighting exterior facades with colour. This luminaire is available in 305 mm, 610 mm, 914 mm or 1219 mm sections, and offers a wide number of options, including: a choice of optics for grazing or floodlighting; RGB, RGBW, or RGBA colour mixing; various mounting options, finishes, accessories and controls; as well as Legacy or Custom output modes.

Features

Colour and Colour Temperature	Additive RGB, Additive RGB + white 3000K, Additive RGB + white 4000K, Additive RGB + amber
Length (nominal)	305 mm, 610 mm, 914 mm, 1219 mm
Optics	Asymmetric Wallwash, 8° x 8°, 10° x 10°, 10° x 30°, 10° x 60°, 10° x 90°, 15° x 25°, 30° x 30°, 30° x 60°, 35° x 35°, 50° x 80°, 60° x 60°, 80° x 80°, 90° x 90°
Options	End-to-end configuration (factory installed 16 in black input cable included), Corrosion-resistant coating for hostile environments, 3G ANSI C136.31-2010 Vibration Rating for bridge applications, CE (certification covers European Economic Area)
Power Consumption	56.59 W/m, Typically 20% higher for 305 mm fixture lengths
Warranty	5-year limited warranty

Performance

Maximum Delivered Output	2,828 lm (1219 mm fixture, RGB full output, 8° x 8°, DMX/RDM), 2,993 lm (1219 mm fixture, RGBW30K full output, 8° x 8°, DMX/RDM), 3,054 lm (1219 mm fixture, RGBW40K full output, 8° x 8°, DMX/RDM), 2,510 lm (1219 mm fixture, RGBA full output, 8° x 8°, DMX/RDM)
---------------------------------	---

Colours and Colour Temperatures



Controls

Ratings

IP66 IK07*

*asymmetric wallwash lens is IK06 rated

Certifications



Maximum Delivered Intensity

53,888 cd at nadir (1219 mm fixture, RGB full output, 8° x 8°, DMX/RDM), 57,045 cd at nadir (1219 mm fixture, RGBW30K full output, 8° x 8°, DMX/RDM), 58,209 cd at nadir (1219 mm fixture, RGBW40K full output, 8° x 8°, DMX/RDM), 47,819 cd at nadir (1219 mm fixture, RGBA full output, 8° x 8°, DMX/RDM)

Illuminance at Distance

Minimum 1 fc at 70.7 m (1219 mm fixture, RGB full output, 8° x 8°, DMX/RDM), Minimum 1 fc at 72.8 m (1219 mm fixture, RGBW30K full output, 8° x 8°, DMX/RDM), Minimum 1 fc at 73.5 m (1219 mm fixture, RGBW40K full output, 8° x 8°, DMX/RDM), Minimum 1 fc at 66.8 m (1219 mm fixture, RGBA full output, 8° x 8°, DMX/RDM)

Lumen Maintenance

L70 280,000 hrs, L95 35,000 hrs

Physical

Housing Material Low copper content extruded aluminium

Lens Material Clear tempered glass

Hardware Material Stainless steel

End Cap Material Machined aluminium

Gasket Material Silicone

Surface Finish Electrostatically applied polyester powder coat

Weight 305 mm: 2.04 kg, 610 mm: 3.18 kg, 914 mm: 4.76 kg, 1219 mm: 6.35 kg

Electrical and control

Voltage 100 to 277 volts, 347 volts available (consult factory for details)

Fixture Cable Power and data in one cable, End-to-end option (ETE): 406 mm black input cable (no jumper cable needed for minimum spacing between two fixtures)

Leader Cable Conductor 5C #16-5

Control Lumentalk, DMX/RDM enabled

Resolution (DMX/RDM) Per foot or per fixture (configured with LumenID V3 software), 8-bit or 16-bit, 3 channels (RGB) or 4 channels (RGBW30K, RGBW40K and RGBA)

RGB Colour Mixing 12 LEDs per 305 mm (4x Red, 4x Green, 4x Blue)

RGBW30K Colour Mixing 12 LEDs per 305 mm (3x Red, 3x Green, 3x Blue, 3x White 3000K)

RGBW40K Colour Mixing 12 LEDs per 305 mm (3x Red, 3x Green, 3x Blue, 3x White 4000K)

RGBA Colour Mixing 12 LEDs per 305 mm (3x Red, 3x Green, 3x Blue, 3x Amber)

Environmental

Storage Temperature -40 °C to 85 °C (device must reach start-up temperature value before operating)

Start-up Temperature -25 °C to 50 °C

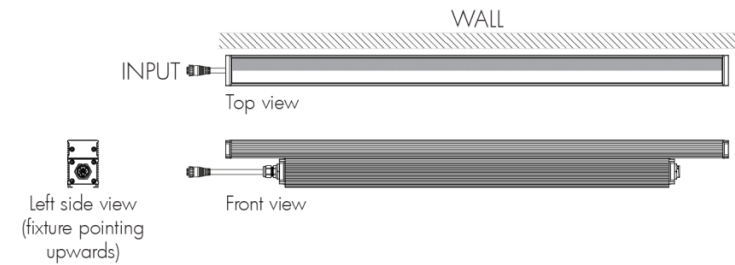
Operating Temperature -40 °C to 50 °C

Ingress Protection Rating IP66, Wet location rated

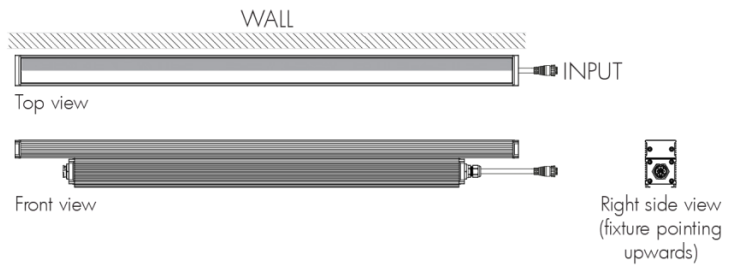
Impact Resistance Rating IK07 (asymmetric wallwash lens is IK06 rated)

Asymmetric wallwash optic details

WWLF - Asymmetric wallwash optic, left feed



WWRF - Asymmetric wallwash optic, right feed

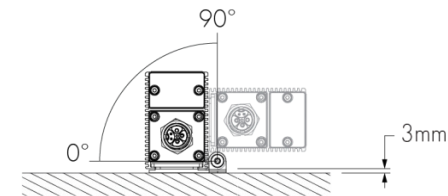


- Always position frosted side toward the wall.
- Fixture's feeding side is based on uplight installations. Feeding sides are reversed when fixture is used in a downlight application.
- Recommended setback from wall is 1/10 of the wall height. Example: 0.6 m setback for a 6.1 m wall.

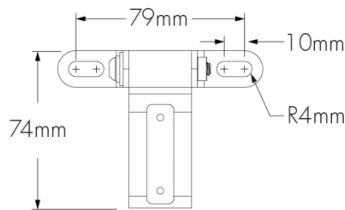
Mounting options

Surface Mount

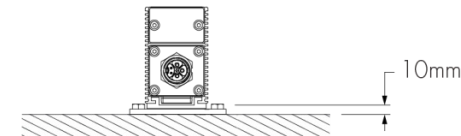
SAM - Slim Adjustable Mounting



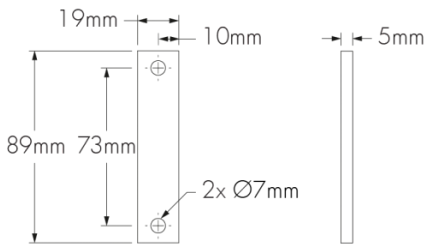
SAM - Mounting hole pattern



UMP - Fixed Mounting

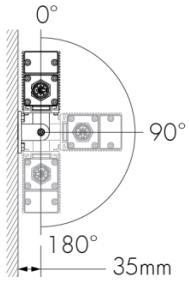


UMP - Mounting hole pattern

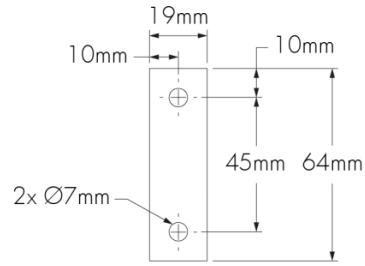


Wall Mount

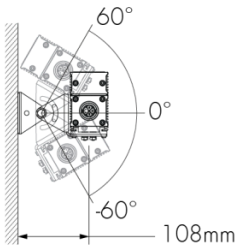
UMAS - Universal Adjustable Mounting



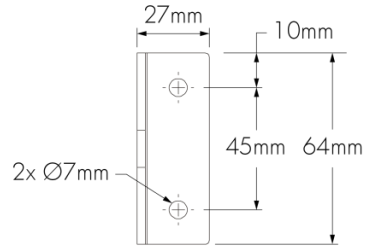
UMAS - Mounting hole pattern



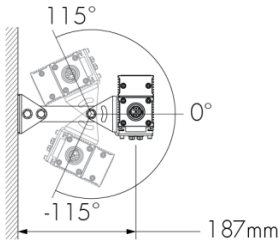
WAM2 - Adjustable Wall Mounting 51 mm



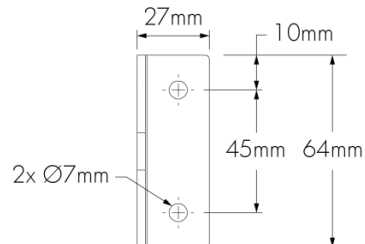
WAM2 - Mounting hole pattern



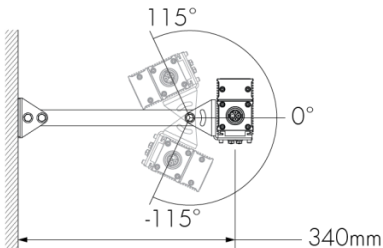
WAM6 - Adjustable Extended Arm Mounting 152 mm



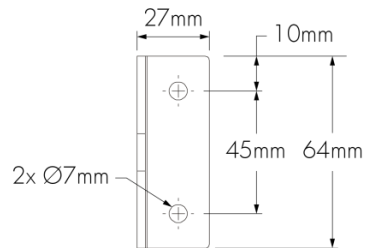
WAM6 - Mounting hole pattern



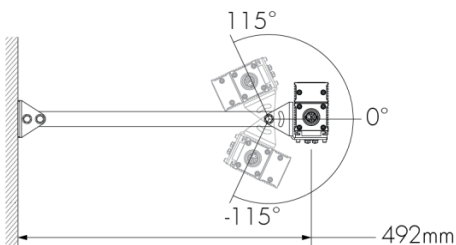
WAM12 - Adjustable Extended Arm Mounting 305 mm



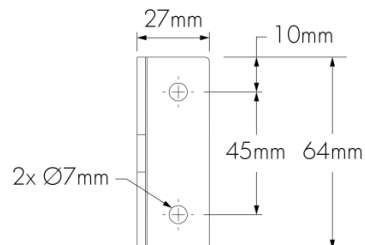
WAM12 - Mounting hole pattern



WAM18 - Adjustable Extended Arm Mounting 457 mm



WAM18 - Mounting hole pattern



End-to-end configuration option (ETE)

- A** - ETE leader cable (order separately)
B - Lumenfacade with ETE option
C - ETE 406 mm black input cable (minimum bend radius: 51 mm)
D - ETE jumper cable (order separately)

Includes a factory installed 406 mm black input cable. A jumper cable is not required for minimum spacing between two end-to-end (ETE) fixtures. An ETE jumper cable is required only if a longer distance between two adjacent ETE fixtures is needed, or to connect two continuous runs of ETE fixtures together.

EPA Guide**Fixture**

	LOG 305 mm	LOG 610 mm	LOG 914 mm	LOG 1219 mm
EPA front (m²) 	0.0255	0.0538	0.091	0.1288
EPA side (m²) 	0.0037	0.0038	0.0041	0.0044

Cables (order separately)**LOGLC - Leader cable for Lumenfacade**

Standard construction

LOGLC-CERTIFICATION-STD-LENGTH-CABLE COLOUR



End-to-end (ETE) option

LOGLC-CERTIFICATION-ETE-LENGTH-CABLE COLOUR

Please specify:

CERTIFICATION: UL or CE; **LENGTH:** 3 m, 7.6 m, 15.2 m, 30.5 m, 45.7 m or 61 m; **CABLE COLOUR:** black or white (connectors are black as standard; ETE fixture input cables are black as standard)

- Suitable for dimming/data and non-dimming applications.
- Sealing end cap is mandatory for any unused connector. One (1) included with every leader cable.
- Consult Lumenfacade leader cable specification sheet for details.

LOGJC - Jumper cable for Lumenfacade

Standard construction

LOGJC-CERTIFICATION-STD-LENGTH-CABLE COLOUR



End-to-end (ETE) option

LOGJC-CERTIFICATION-ETE-LENGTH-CABLE COLOUR

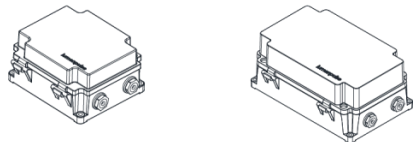
Please specify:

CERTIFICATION: UL or CE; **LENGTH:** 0.3 m (available for ETE option only), 0.6 m to 9.1 m (available in 0.3 m increments) or 15.2 m; **CABLE COLOUR:** black or white (connectors are black as standard; ETE fixture input cables are black as standard)

- Suitable for dimming/data and non-dimming applications.
- Consult Lumenfacade jumper cable specification sheet for details.

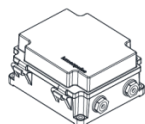
Control boxes (order separately)

CBX-DMX/RDM - DMX/RDM enabled (daisy chain or star configuration)



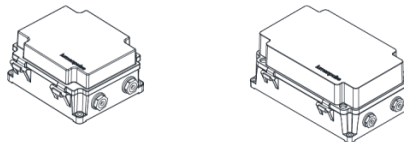
DMX/RDM control box. Up to six power and data outputs to fixtures or fixture runs. Consult CBX specification sheet and installation instructions for details. Lumenterminators provided with CBX (2x for daisy chain configuration, 6x for star configuration), consult factory to order spares.

LDB - Lumentalk Data Bridge



Lumentalk Data Bridge, 0-10V or DMX output. Consult LDB specification sheet for details.

CBX-ENET - Ethernet enabled (daisy chain or star configuration)



Ethernet control box. Up to four power and data outputs to fixture or fixture runs. Consult Ethernet CBX specification sheet and installation instructions for details.

Control systems (order separately)

LTN2 - Lumentone™ 2



Lumentone 2 is a simple pre-programmed DMX 512 controller with a push button rotary dial and live feedback.

PHAROS - Pharos® kit



The Pharos kit, available for 1 or 2 DMX universes, allows for complete control of large lighting installations. 2 DMX universes kit shown.

Diagnostic and addressing tools (order separately)

LID - LumenID



LumenID is a diagnostic and addressing DMX/RDM tool. It must be specified on all DMX applications. Consult LID specification sheet for details.

LID-LT - LumentalkID

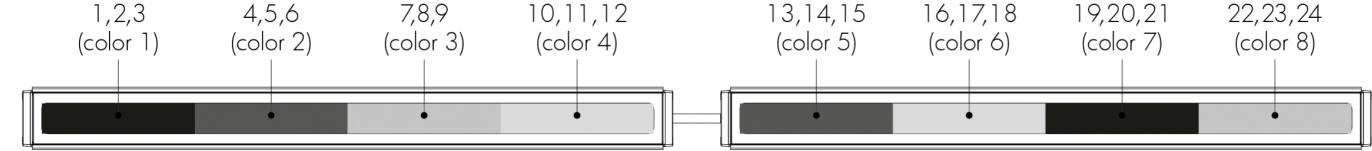


LumentalkID is a diagnostic and addressing tool. It must be specified for all Lumentalk (LT) applications. Consult LID-LT specification sheet for details.

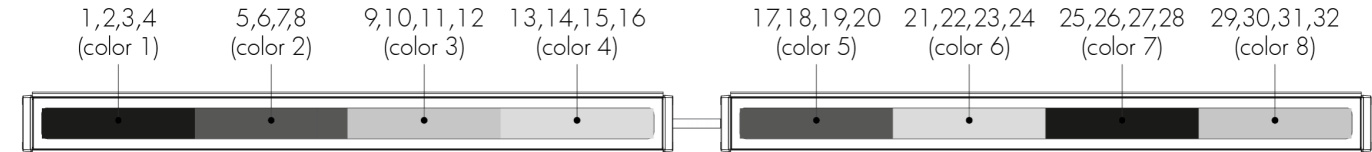
Resolution details

DMX/RDM control, resolution per foot: each 305 mm section is addressed independently

DMX addresses:



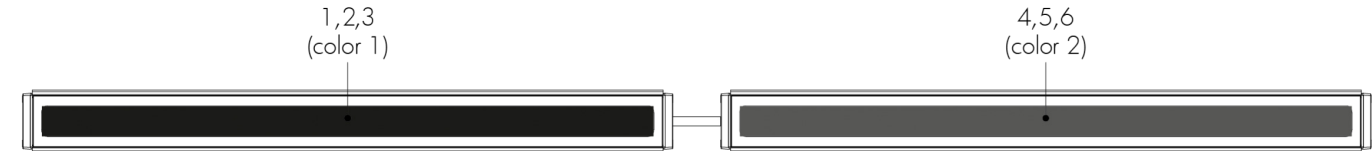
RGB colour mixing option



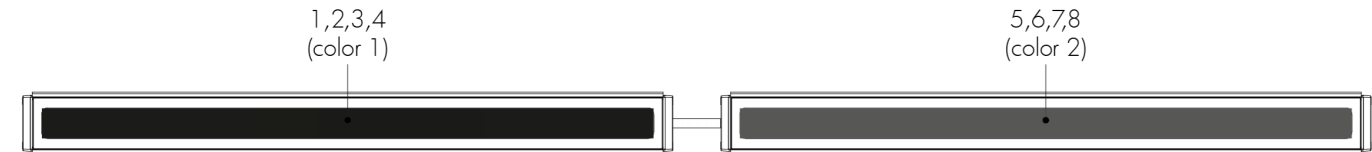
RGBW30K, RGBW40K and RGBA colour mixing options

DMX/RDM control, resolution per fixture: each fixture is addressed independently

DMX addresses:



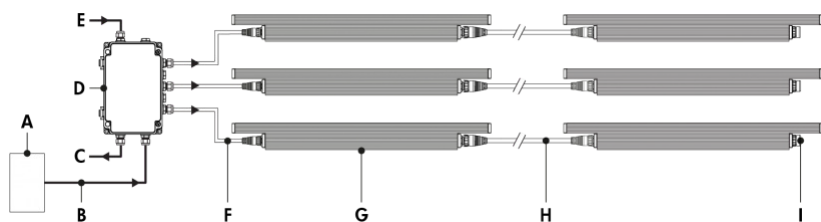
RGB colour mixing option



RGBW30K, RGBW40K and RGBA colour mixing options

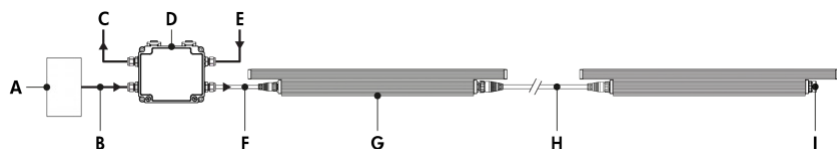
- 1219 mm fixtures shown.
- Applicable for DMX/RDM control option only. Fixture resolution can be configured on-site within the LumenID V3 software. A DMX/RDM enabled CBX is required.

Star Layout (DMX/RDM)



- A** - DMX/RDM controller (order separately from Lumenpulse, or by others)
- B** - Data input (Belden 9841 or equivalent, by others)
- C** - Data output to next CBX (optional, not isolated/not boosted)
- D** - CBX-ST
- E** - Power input (100-277V, wiring by others)
- F** - Leader cable (LOGLC)
- G** - Lumenfacade
- H** - Jumper cable (LOGJC)
- I** - Sealing end cap

Daisy Chain Layout (DMX/RDM)



- A** - DMX/RDM controller (order separately from Lumenpulse, or by others)
- B** - Data input (Belden 9841 or equivalent, by others)
- C** - Data output to next CBX (optional, not isolated/not boosted)
- D** - CBX-DS
- E** - Power input (100-277V, wiring by others)
- F** - Leader cable (LOGLC)
- G** - Lumenfacade
- H** - Jumper cable (LOGJC)
- I** - Sealing end cap

Based on 15A maximum, 15.2 m leader cable.

- Consult CBX installation instructions for additional wiring details.
- Consult factory for specific applications and maximum fixture count/cable length recommendations. Maximum run length calculations are typically based on 1219 mm fixtures.
- The DMX/RDM protocol states a maximum of 32 DMX/RDM enabled fixtures on any single run.
- Maximum of 4 DMX/RDM repeaters/CBX cascading in line.
- Maximum of 6 outputs per CBX-ST; maximum of 1 output per CBX-DS.
- RGB colour mixture option requires 3 DMX addresses. RGBW30K and RGBW40K colour mixture options require 4 DMX addresses. RGBA colour mixture option requires 4 DMX addresses.
- 56.59 W/m.

How to order

Housing ⁽¹⁾	Voltage ⁽²⁾	Length	Colour and Colour Temperature	Optics	Mounting Options	Finish	Control	Options
LOG Lumenfacade™	100 100 volts 120 120 volts 208 208 volts 220 220 volts 240 240 volts 277 277 volts	12 340 mm (2.04 kg) ⁽¹⁾ 24 645 mm (3.18 kg) 36 949 mm (4.76 kg) 48 1254 mm (6.35 kg)	RGB Additive RGB RGBW30K Additive RGB + white 3000K ⁽⁴⁾ RGBW40K Additive RGB + white 4000K ⁽⁴⁾ RGBA Additive RGB + amber	WWLF Asymmetric Wallwash, left feed WWRF Asymmetric Wallwash, right feed 8x8 8° x 8° ⁽⁵⁾ 10x10 10° x 10° ⁽⁵⁾ 10x30 10° x 30° 10x60 10° x 60° 10x90 10° x 90° 15x25 15° x 25° 30x30 30° x 30° 30x60 30° x 60° 35x35 35° x 35° 50x80 50° x 80° 60x60 60° x 60° 80x80 80° x 80° 90x90 90° x 90°	SAM Slim Adjustable Mounting UMP Fixed Mounting ⁽⁶⁾ UMAS Universal Adjustable Mounting ⁽⁶⁾ WAM2 Adjustable Wall Mounting 51 mm WAM6 Adjustable Extended Arm Mounting 152 mm WAM12 Adjustable Extended Arm Mounting 305 mm WAM18 Adjustable Extended Arm Mounting 457 mm	BK Black Sandtex® BRZ Bronze Sandtex® SI Silver Sandtex® WH Smooth white CC Custom colour and finish (please specify RAL colour) ⁽⁷⁾ ⁽⁸⁾ ⁽⁹⁾	LT Lumentalk ⁽³⁾ ⁽¹⁰⁾ ⁽¹¹⁾ DMX/RDM DMX/RDM enabled ⁽¹²⁾	ETE End-to-end configuration (factory installed 16 in black input cable included) CRC Corrosion-resistant coating for hostile environments ⁽¹³⁾ ⁽¹⁴⁾ 3GV 3G ANSI C136.31-2010 Vibration Rating for bridge applications ⁽¹⁵⁾ CE CE (certification covers European Economic Area) ⁽¹⁶⁾

Notes:

1. Power consumption is typically 20% higher for 305 mm fixture lengths.

2. 347 volts available, consult factory for details.

3. To connect 305 mm fixture lengths to the Lumentalk system, DMX/RDM must be specified as the control option, and a Lumentalk Data Bridge (LDB-DMX) is required. See the typical wiring diagrams in the specification sheet for details.

4. 2700K, 3500K and Royal Blue available, consult factory. Longer lead times apply.

5. For best results, we recommend a 152 mm setback from surface. Contact factory for application support.

6. Suitable to use when 3GV option is specified.

7. Lumenpulse offers a wide selection of RAL CLASSIC (K7) colours with a smooth texture and high-gloss finish. Please consult factory for a list of available K7 colours, other RAL textures and glosses, or to match alternate colour charts. Final colour matching results may vary.

8. Setup charges apply for RAL colours. Consult factory for details.

9. Longer lead times can be expected for custom RAL colour finishes.

10. Available for 610 mm, 914 mm and 1219 mm fixture lengths only.

11. A Lumentranslator 2 (LTL2) and LumentalkID (LIDL) must be specified for Lumentalk applications. Consult Lumentranslator 2 and Lumentalk pages and specification sheets for details.

12. A control box (CBX) and LumenID (LID) must be specified.

13. Use only when exposed to salt spray. This option is not required for normal outdoor exposure.

14. Setup charges apply. Consult factory for details.

15. Available with UMP and UMAS mounting options only.

16. Consult European specification sheet and installation instructions for CE wiring information.