

Project Name

Bennett Bridge

Type

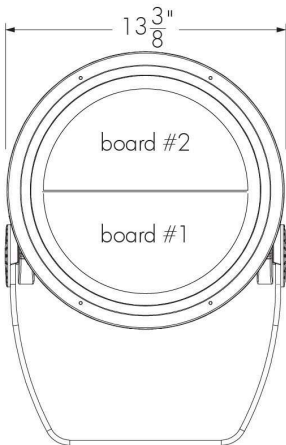
O1-A

Catalog / Part Number

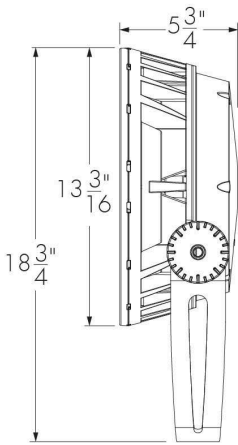
LBG 120 MRGBWP NS NS DMX/RDM 3GV UL

Qty

6



Front View



Side View

Photometric Summary (Discrete RGBW40K)

Symmetric		
	Delivered output (lm)	Intensity (peak cd)
XN (3°)	4,669	430,170
VN (6°)	5,079	351,460
NS (10°)	5,049	189,556
NF (20°)	4,425	37,332
M (30°)	4,483	18,931
FL (40°)	4,465	12,309
WFL (60°)	4,599	4,775
Asymmetric		
NAS	3,829	63,368 (@2.5°)
WW	4,303	18,755 (@5°)

1. Based on RGBW40K full output.
2. Photometric performance is measured in compliance with IESNA LM-79-24.
3. Refer to the [Lumenbeam Color Changing Photometric Guide](#) on Lumenpulse website for information on other color temperatures.

Photometric Summary (Opticolor+ MRGBWP)

Symmetric		
	Delivered output (lm)	Intensity (peak cd)
NS (10°)	4,891	86,649
NF (20°)	4,375	28,226
M (30°)	4,255	15,349
FL (40°)	4,405	11,899
WFL (60°)	4,233	4,330
VWFL(90°)	3,903	1,988

1. Based on MRGBWP full output, white set to 3000K.
2. Photometric performance is measured in compliance with IESNA LM-79-24.
3. Refer to the [Lumenbeam Color Changing Photometric Guide](#) on Lumenpulse website for information on other color temperatures.

Description

The Lumenbeam Grande Color Changing is an IP66-rated luminaire for lighting landscapes, trees, columns, monuments, and architectural details. The system offers numerous options including optics for flood or accent lighting, a choice of color mixing, as well as various accessories, spread lenses, and controls. The luminaire also has an anti-corrosion option for use in harsh, chemical, or coastal environments.

Features

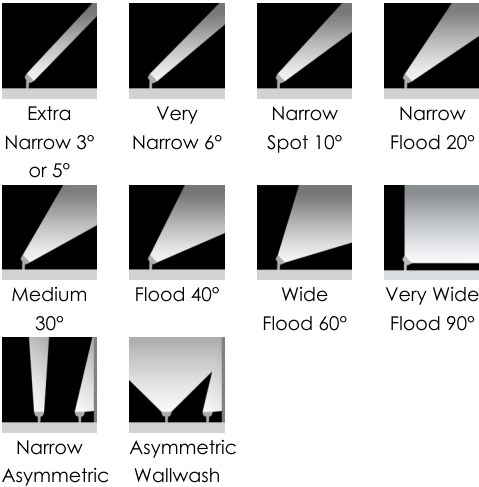
Colors and Color Temperature (Discrete)	RGBA: Discrete Red, Green Bue, Amber RGBW30K: Discrete Red, Green, Blue, White 30K RGBW40K: Discrete Red, Green, Blue, White 40K RGB: Discrete Red, Green, Blue
Colors and Color Temperature (Opticolor™)	MRGBA: Opticolor™ Mix-at-Source Red, Green, Blue, PC Amber
Colors and Color Temperature (Opticolor+™)	MRGBWP: Opticolor+™ Mix-at-Source Red, Green, Blue Plus White Settable Range 24K to 65K MRGBWP Typical Color Rendering: 2700K-5000K: 90+ CRI 2500K-6500K: 80+ CRI MRGRBWP: Opticolor+™ Mix-at-Source Red, Green, Royal Blue Plus White Settable Range 24K to 65K
Optics (Nominal Distribution)	XN: XN (3° or 5°) VN: VN (6°) NS: NS (10°) NF: NF (20°) M: M (30°) FL: FL (40°) WFL: WFL (60°) VWFL: VWFL (90°) NAS: NAS (Narrow Asymmetric) WW: WW (Asymmetric Wallwash)

Photometric Summary (Opticolor MRGBA)

Symmetric		
	Delivered output (lm)	Intensity (peak cd)
NS (10°)	4,754	84,223
NF (20°)	4,253	27,435
M (30°)	4,136	14,919
FL (40°)	4,282	11,566
WFL (60°)	4,114	4,209
VWFL(90°)	3,794	1,932

1. Based on MRGBA full output.
2. Photometric performance is measured in compliance with IESNA LM-79-24.
3. Refer to the [Lumenbeam Color Changing Photometric Guide](#) on Lumenpulse website for information on other color temperatures.

Optic



Optical Option	LSLH: Linear Spread Lens Horizontal Distribution LSLV: Linear Spread Lens Vertical Distribution
Option	SY: Short Yoke SRY: Short Rotational Yoke RY: Rotational Yoke 3GV: 3G ANSI C136.31-2010 Vibration Rating for Bridge Applications CRC: Corrosion-Resistant Coating for Hostile Environments

Cable Color	BK: Black WH: White
-------------	------------------------

Power Consumption	86 to 100 W (see Power Consumption table for details)
-------------------	---

Warranty	5-year limited warranty
----------	-------------------------

Performance

Maximum Delivered Output (Discrete)	5,143 lm (RGB full output, VN 6°, DMX/RDM) 4,977 lm (RGBW30K full output, VN 6°, DMX/RDM) 5,079 lm (RGBW40K full output, VN 6°, DMX/RDM) 4,149 lm (RGBA full output, VN 6°, DMX/RDM)
-------------------------------------	---

Maximum Delivered Output (Opticolor)	4,754 lm (MRGBA full output, NS 10°, DMX/RDM)
--------------------------------------	---

Maximum Delivered Output (Opticolor+)	4,891 lm (MRGBWP full output, NS 10°, DMX/RDM)
---------------------------------------	--

Maximum Delivered Intensity (Discrete)	357,498 cd at nadir (RGB full output, XN 5°, DMX/RDM) 421,567 cd at nadir (RGBW30K full output, XN 3°, DMX/RDM) 430,170 cd at nadir (RGBW40K full output, XN 3°, DMX/RDM) 351,449 cd at nadir (RGBA full output, XN 3°, DMX/RDM)
--	---

Maximum Delivered Intensity (Opticolor)	84,223 cd at nadir (MRGBA full output, NS 10°, DMX/RDM)
---	---

Maximum Delivered Intensity (Opticolor+)	86,649 cd at nadir (RGBW30K full output, XN 3°, DMX/RDM)
--	--

Illuminance at Distance (Discrete)	Minimum 1 fc at 600 ft (RGB full output, XN 5°, DMX/RDM) Minimum 1 fc at 652 ft (RGBW30K full output, XN 3°, DMX/RDM) Minimum 1 fc at 659 ft (RGBW40K full output, XN 3°, DMX/RDM) Minimum 1 fc at 595 ft (RGBA full output, XN 3°, DMX/RDM)
------------------------------------	---

Illuminance at Distance (Opticolor)	Minimum 1 fc at 290 ft (MRGBA full output, NS 10°, DMX/RDM)
-------------------------------------	---

Illuminance at Distance (Opticolor+)	Minimum 1 fc at 294 ft (MRGBWP full output, NS 10°, DMX/RDM)
--------------------------------------	--

Lumen Maintenance	L70 (15K) > 90,000 hrs Ta 25 °C (TM-21 reported) L70 > 150,000 hrs Ta 25 °C (projected)* L90 (15K) = 55,400 hrs Ta 25 °C (TM-21 reported) L90 = 55,400 hrs Ta 25 °C (projected)* *Estimated based on in-situ case temperature and LM-80 report
-------------------	--

Physical

Housing Material	Low copper content high pressure die-cast aluminum
Yoke Material	Heavy aluminum (standard yoke included)
Lens Material	Clear tempered glass

Color and Color Temperature



opticolor+™
Opticolor™
Mix-at-Source
Red, Green,
Blue Plus White
Settable
Range 24K to
65K



opticolor™
Opticolor™
Mix-at-Source
Red, Green,
Blue, PC
Amber



RGBA
Red Green Blue Amber
Discrete Red,
Green Bue,
Amber



RGBW
Red Green Blue White
Discrete Red,
Green, Blue,
White 30K



RGBW
Red Green Blue White
Discrete Red,
Green, Blue,
White 40K



RGB
Red Green Blue
Discrete Red,
Green, Blue



opticolor+™
Opticolor™
Mix-at-Source
Red, Green,
Royal Blue Plus
White Settable
Range 24K to
65K

Control






DMX/RDM


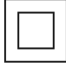


Ratings

IP66 IK09

Certifications





Dome Lens Material	Acrylic
Hardware Material	Stainless steel
Gasket Material	Silicone
Surface Finish	Electrostatically applied polyester powder coat
Weight	24 lbs
EPA	Front = 1.12 ft², Side = 0.34 ft²

Electrical and Control

Voltage	100 to 277 volts
Fixture Cable	Power and data in one cable
Conductors	3C #16-3 (LT control) 5C #16-5 (DALI8 control) 6C #14-3/ #24-3 (DMX/RDM control)
Control	Lumentalk, DMX/RDM Enabled, DALI 2 T8 Enabled Dimming 0.1%
Resolution (DMX/RDM)	Per board or fixture (configured with LumenID V3 software), 8-bit or 16-bit, 3 channels (RGB) or 4 channels (RGBW30K, RGBW40K, RGBA, MRGBA, MRGBWP and MRGRBWP)

Environmental

Storage Temperature	-40 °F to 158 °F (device must reach start-up temperature value before operating)
Start-up Temperature	-13 °F to 122 °F
Operating Temperature	-40 °F to 122 °F
Ingress Protection Rating	IP66 Wet location rated
Impact Resistance Rating	IK09

Application Wind Speed	Luminaires were designed based on AASHTO 2013 standard to ensure highest quality and safety. Installation should be validated by a local project engineer to ensure the luminaires are suitable for the wind speed and exposure of the specific application
------------------------	---

Accessories (Order Separately)

Optical Accessories	Lumenbeam Grande Snoot, Lumenbeam Grande Snoot Wide, Lumenbeam Grande Visor, Lumenbeam Grande Linear Spread Lens Adjustable, Lumenbeam Grande Wire Guard, Lumenbeam Grande Dome Lens
Control Boxes	DMX/RDM enabled (Daisy Chain or Star Configuration), Ethernet enabled (Daisy Chain or Star Configuration)
Control Systems	Pharos® Designer Lighting Control Kit (PHAROS), Pharos® Expert Control Kit (EXPERT)
Diagnostic and Addressing Tools	LumenID (LID)

Important

Virtual Patent Marking Notice

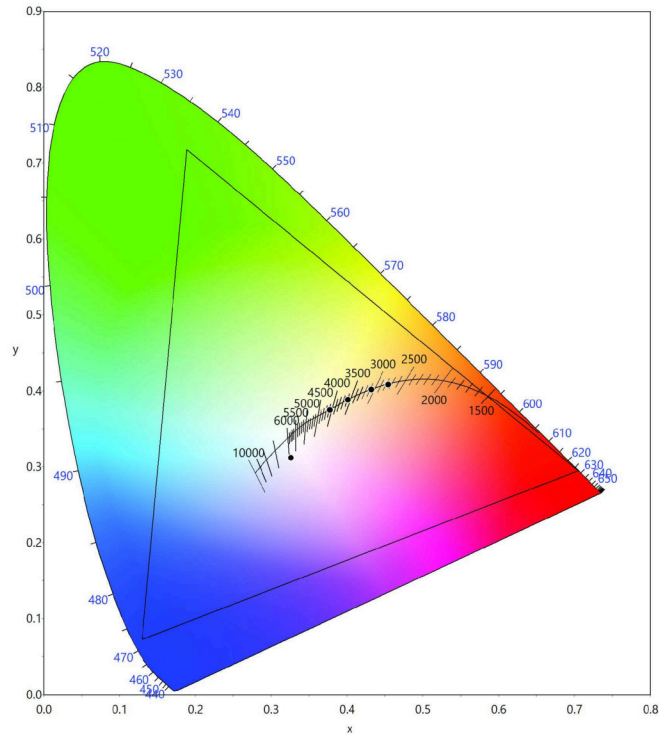
This website (<https://www.lmpg.com/patents-trademarks>) is provided to satisfy the virtual patent marking provisions of applicable jurisdictions. Some products listed may be covered by additional patents not referenced here.

Power Consumption

Control Option	Color and Color Temperature	Optic	Wattage (W)
LT DMX/RDM DALI8	RGB	XN/NAS	100
		VN/NS/NF/M/FL/WFL/ VWFL/WWW	86
LT DMX/RDM DALI8	RGBW, RGBA	XN/NAS	96
		VN/NS/NF/M/FL/WFL/ VWFL/WWW	90
LT DMX/RDM DALI8	MRGBA, MRGBWVP, MRGRBVVP	NS/NF/M/FL/WFL/VWFL	100

Color Point Information

MRGBWP



Dominant Wavelength and Chromaticity

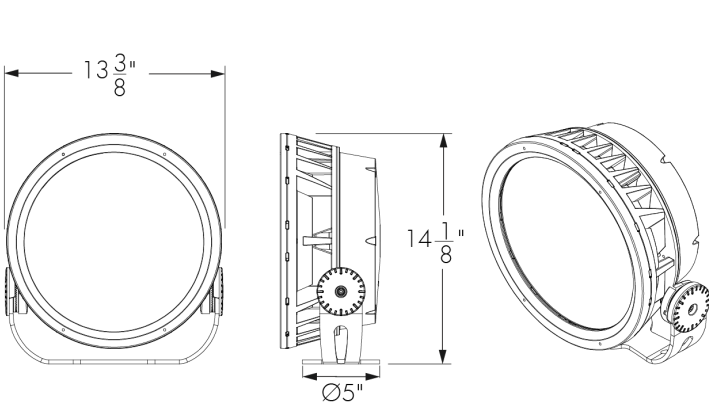
	Dominant Wavelength	Chromaticity	
		Cx	Cy
Red	~628nm	0.7050	0.2949
Green	~531nm	0.1885	0.7178
Blue	~471nm	0.1298	0.0726
Amber	~591nm	0.5755	0.4126

	Cx	Cy
MRGBWP Full On	0.3261	0.3121
27K Optidrive	0.4545	0.4081
30K Optidrive	0.4318	0.4017
35K Optidrive	0.4010	0.3883
40K Optidrive	0.3773	0.3747

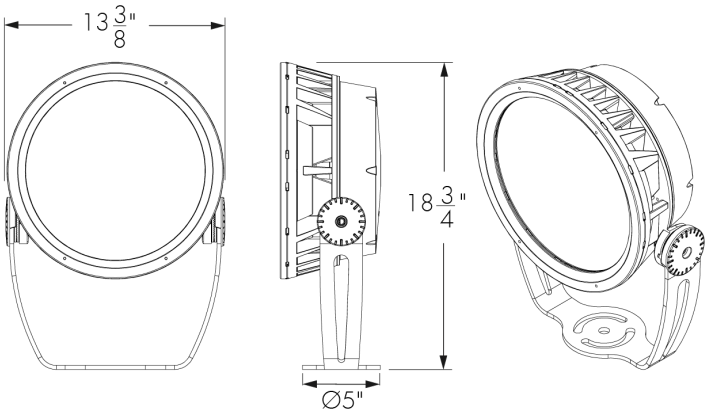
Values measured from Steady State Full on Optidrive @ 25°C ambient conditions.

Mounting Options

SRY - Short Rotational Yoke

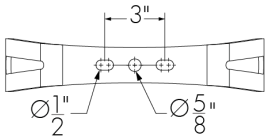


RY - Rotational Yoke



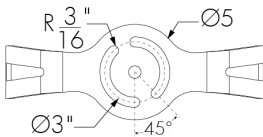
Mounting Details

Mounting Hole Pattern - Standard And Short Yoke



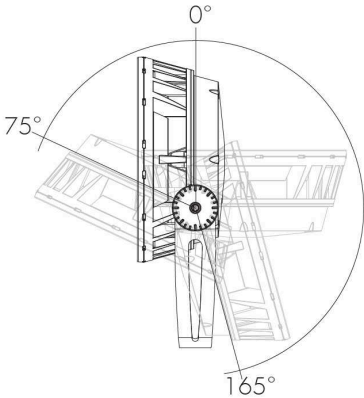
3 bolts are required for wind and vibration resistance, provided by others.

Mounting Hole Pattern - Rotational Yoke



3 bolts are required for wind and vibration resistance, provided by others.

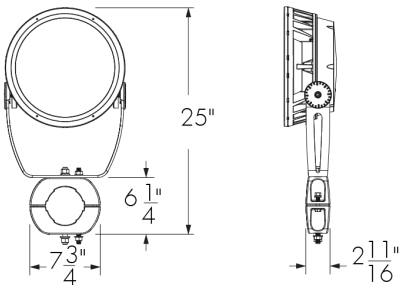
Adjustable Pivot Limits (Adjustable In 6 Degree Increments)



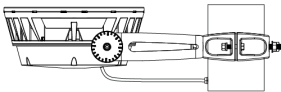
Standard Yoke

Mounting Accessories (Order Separately)

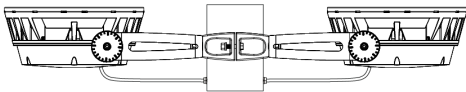
Round Pole Mounting Accessory



PM4 model shown.
Consult factory for square pole section.



PM4-1, PM4.5-1, PM5-1 - Round pole mounting accessory - single fixture

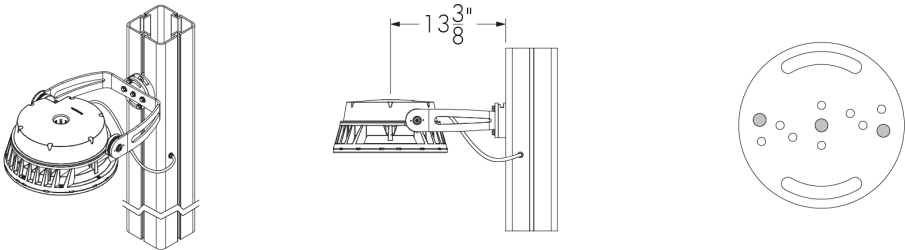


PM4-5, PM4.5-2, PM5-2 - Round pole mounting accessory - twin fixtures
*One bracket assembly is supplied per 2 fixtures unless otherwise specified.

	PM4	PM4.5	PM5
For pole Ø	4" ± 1/16	4.5" ± 1/16	5" ± 1/16

Consult factory for other pole diameters.

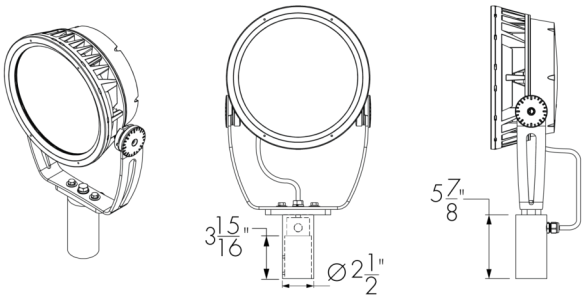
PLTU - Universal Yoke



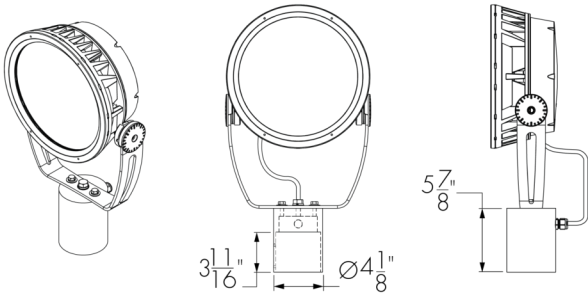
Refer to the Universal Yoke specification sheet and Pole installation instructions for more details. Square Lumentech profile shown.

The mounting holes used for this fixture are shown in gray.

Tenon Adapter



TN2 - Tenon adapter to fit on 2 3/8 in O.D. tenon
Vertical mounting only. Consult factory for horizontal mounting.

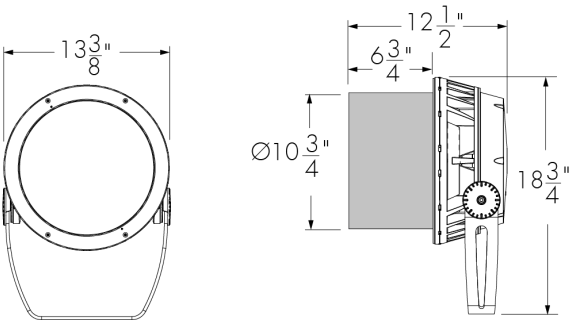


TN4 - Tenon adapter to fit on 4 in O.D. tenon
Vertical mounting only. Consult factory for horizontal mounting.

Optical Accessories (Order Separately)

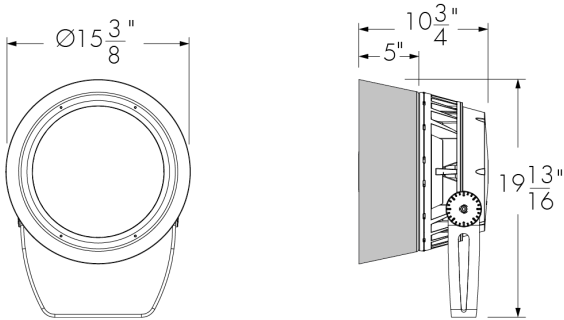
Installed optical accessories will affect the maximum pivot limits for each mounting option, consult factory for details.

SN - Snoot



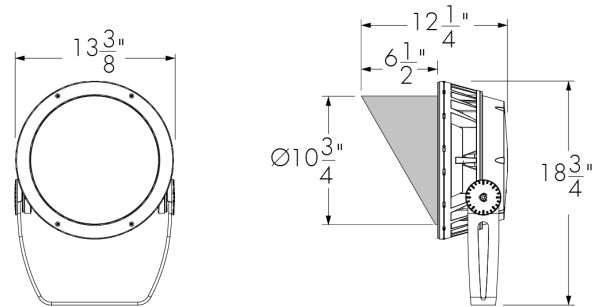
LBGSN-FINISH-BK-OPTIONS (CRC)
Interior surface painted black. Please specify the exterior **FINISH** from the list of finishes in the fixture order code.

SNW - Snoot Wide



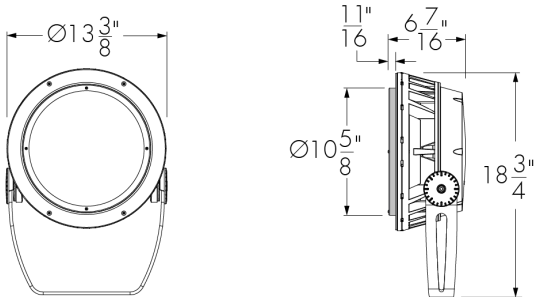
LBGSNW-FINISH-BK-OPTIONS (CRC)
Interior surface painted black. Please specify the exterior **FINISH** from the list of finishes in the fixture order code.

VS - Visor



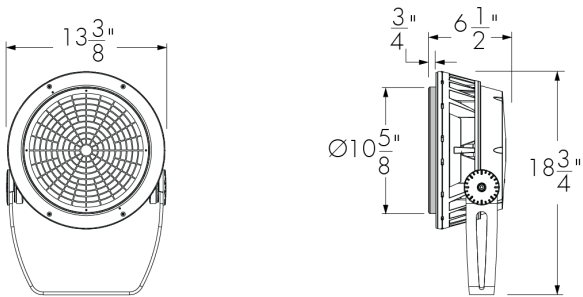
LBGVS-FINISH-BK-OPTIONS (CRC)
Interior surface painted black. Please specify the exterior **FINISH** from the list of finishes in the fixture order code.

LSLA - Linear Spread Lens Adjustable



LBGLSLA-FINISH-OPTIONS (CRC)
Please specify the exterior **FINISH** from the list of finishes in the fixture order code.

WG - Wire Guard



LBGWG-FINISH-OPTIONS (CRC)
Please specify the exterior **FINISH** from the list of finishes in the fixture order code.

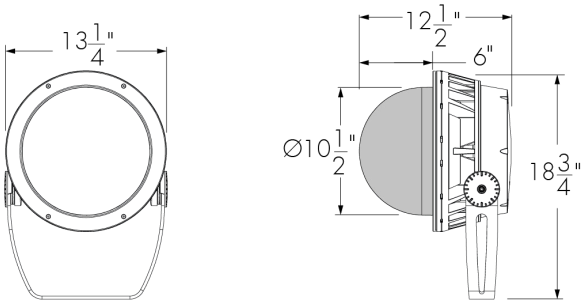
Accessory Combinations

+	Snoot	Snoot wide	Visor
Linear spread lens adjustable	LBGSNLSLA	N/A *	LBGVLSLA
Wire guard	LBGSNWG	N/A	LBGVSWG

Accessory combinations must be ordered together on a single line
Ex: A snoot + wire guard combination order code is LBGSNWG-FINISH-BK-OPTIONS. A maximum of two accessories can be combined per fixture.
*Consult factory for a linear spread lens adjustable + snoot wide combination.

Installed optical accessories will affect the maximum pivot limits for each mounting option, consult factory for details.

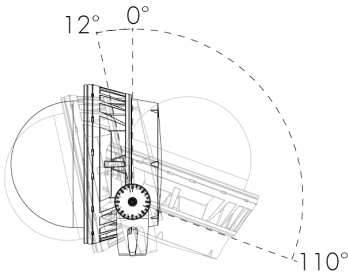
DM - Dome Lens



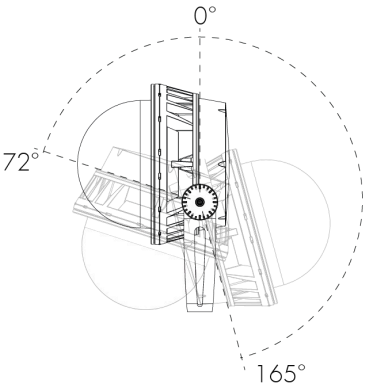
LBGDM-FINISH-OPTIONS (CRC)

Please specify the exterior **FINISH** from the list of finishes in the fixture order code.

Dome - Short Yoke - Pivot limits



Dome - Standard Yoke - Pivot limits



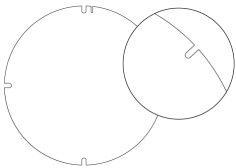
Dome Lens is available with WFL Optic only. The WFL optic must be specified for the fixture.

Dome Lens cannot be combined with other optical accessories.

Dome Lens will affect beam distribution. Consult factory for application support and photometric performance.

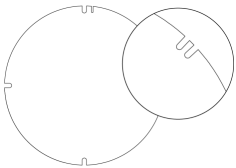
Diffuser Lenses (Intended for Mockup Purposes Only, Order Separately)

Diffuser Lens 1 (1 Notch)



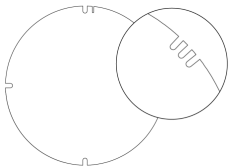
147683

Diffuser Lens 2 (2 Notches)



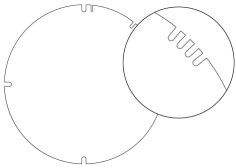
147684

Diffuser Lens 3 (3 Notches)



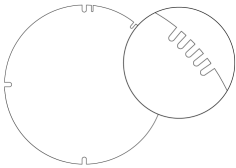
147685

Diffuser Lens 4 (4 Notches)



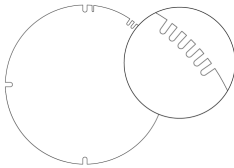
147686

Diffuser Lens 5 (5 Notches)



147687

Diffuser Lens 6 (6 Notches)



147688

Final Distribution Using Diffuser Lenses

	Final Distribution Using Diffuser Lens					
Original Distribution on Fixture	Diffuser Lens 1 1 Notch	Diffuser Lens 2 2 Notches	Diffuser Lens 3 3 Notches	Diffuser Lens 4 4 Notches	Diffuser Lens 5 5 Notches	Diffuser Lens 6 6 Notches
XN (4°/5°)	VN	NS	NF	M	FL	WFL
VN (6°)	NS					
NS (10°)						
NF (20°)						
M (30°)						
FL (40°)						
WFL (60°)						
VWFL (90°)						

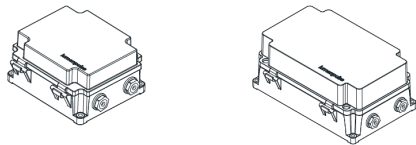
Choose a diffuser lens based on the desired final beam distribution. Refer to the 6-digit part numbers above to order diffuser lenses individually. To order a complete set of 6 diffuser lenses in a bag, refer to the following item names: **LBS**: LBALK-S **LBM/LBMP**: LBALK-M **LBL/LBLP**: LBALK-L **LBG/LBGP**: LBALK-G **LBX/LBXP**: LBALK-X.

The diffuser lenses are intended for mockup purposes only. A lens holder is required to install a diffuser lens on the fixture, order separately using the following names: **LBS**: LBSLSLA-**FINISH**-LBALK **LBM/LBMP**: LBMLSLSLA-**FINISH**-LBALK **LBL/LBLP**: LBLLSLSLA-**FINISH**-LBALK **LBG/LBGP**: LBGLSLA-**FINISH**-LBALK **LBX/LBXP**: LBXLSLA-**FINISH**-LBALK

Please specify the exterior **FINISH** from the list of finishes in the fixture order code.
Refer to the Diffuser Lens Installation Instructions on the Lumenpulse website for information on installing the diffuser lenses.

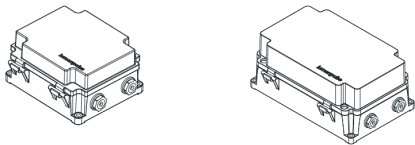
Control Boxes (Order Separately)

CBX-DMX/RDM - DMX/RDM Enabled (Daisy Chain or Star Configuration)



DMX/RDM control box. Up to six power and data outputs to fixtures or fixture runs. Consult CBX specification sheet and installation instructions for details. Lumenterminators provided with CBX (2x for Daisy Chain configuration, 6x for Star configuration), consult factory to order spares.

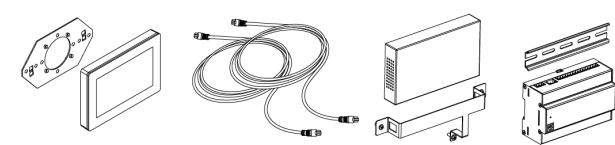
CBX-ENET - Ethernet Enabled (Daisy Chain or Star Configuration)



Ethernet control box. Up to four power and data outputs to fixture or fixture runs. Consult Ethernet CBX specification sheet and installation instructions for details.

Control Systems (Order Separately)

PHAROS - Pharos® Designer Lighting Control Kit



The Pharos Designer Lighting Control Kit, available for 1 or 2 DMX universes, allows for complete control of large lighting installations.

EXPERT - Pharos® Expert Control Kit



The Pharos Expert Control Kit, available for 1, 2, 4 or 6 DMX universes, allows for complete control of large lighting installations.

Diagnostic And Addressing Tools (Order Separately)

EPA Guide

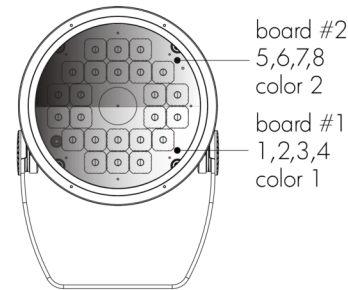
	LBG	LBG with Snoot	LBG with Visor	LBG with Snoot Wide	LBG with Dome Lens
EPA front (sq ft)	1.117	1.117	1.117	1.800	1.117
EPA side (sq ft)	0.341	0.740	0.726	0.733	0.491

Resolution Details (Discrete)

Fixture resolution can be configured on-site within the LumenID V3 software.

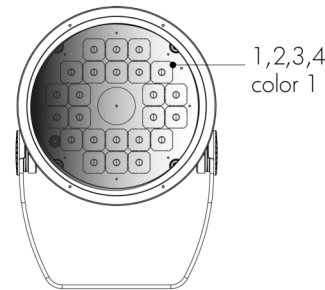
Resolution Details (Opticolor and Opticolor+)

Resolution Per Board: Each Board is Addressed Independently
DMX Addresses:



MRGBA, MRGBWP and MRGRBWP color mixing options

Resolution Per Fixture: Each Fixture Is Addressed Independently
DMX Addresses:



MRGBA, MRGBWP and MRGRBWP color mixing options

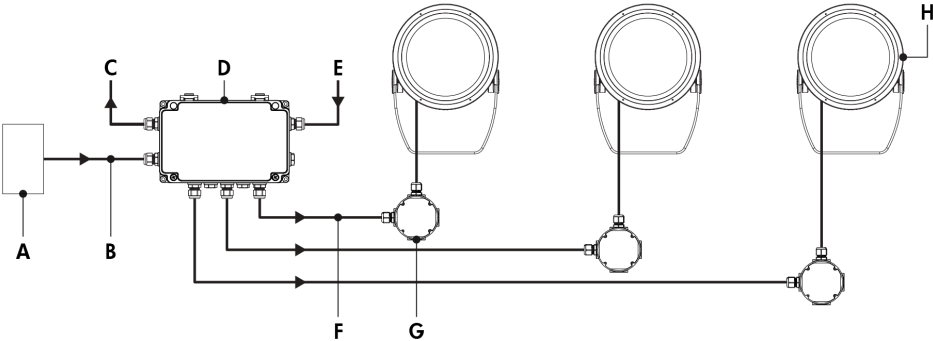
Fixture resolution can be configured on-site within the LumenID V3 software.

Typical Wiring Diagrams

Wiring Color Code

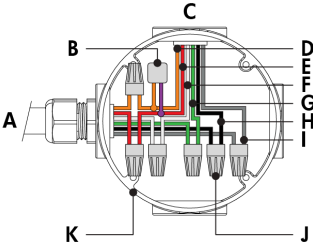
UL Color Code	USE
Green	Ground
Black	Line
White	Line/Neutral
Red or Purple	0-10V / Data +
Orange	0-10V / Data -
Gray	Signal common (DMX/RDM only)

Star Layout (DMX/RDM)



- A - DMX/RDM controller (order separately from Lumenpulse, or by others)
- B - Data input (Belden 9841 or equivalent, by others)
- C - Data output to next CBX (optional, not isolated/not boosted)
- D - CBX-ST
- E - Power input (100-277V AC, wiring by others)
- F - Power and data output to fixture (wiring by others)
- G - Junction box (by others)
- H - Lumenbeam Grande

Star Layout (DMX/RDM) - Wiring Detail



- A - From CBX
- B - Lumenterminator
- C - To fixture
- D - Data -
- E - Data +
- F - Neutral
- G - Ground
- H - Line
- I - Signal common
- J - Wire-nut (by others)
- K - Junction box (by others)

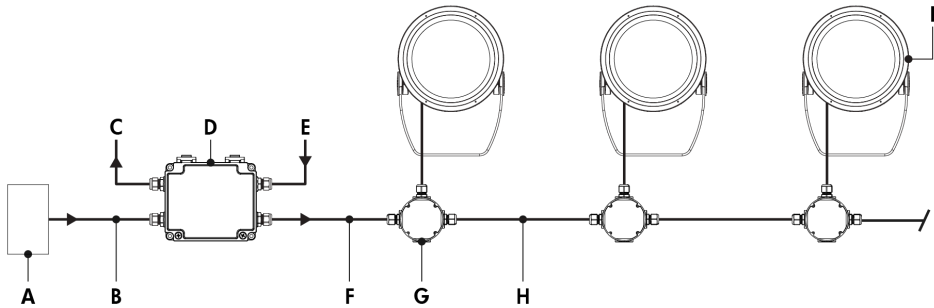
Maximum Fixture Count Per Run

Configuration/Voltage	120V	208V	240V	277V
LBG	10	16	18	21

Based on 15A maximum, 16AWG cable, fixtures spaced 10 ft on center, first fixture 50 ft from CBX.

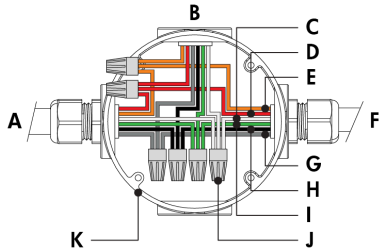
- Consult CBX installation instructions for additional wiring details.
- Consult factory for specific applications and maximum fixture count/cable length recommendations.
- The DMX/RDM protocol states a maximum of 32 DMX/RDM enabled fixtures on any single run.
- Maximum of 4 DMX/RDM repeaters/CBX cascading in line.
- Maximum of 6 outputs per CBX-ST.
- RGB color mixture option requires 3 DMX addresses. RGBW30K and RGBW40K, RGBA, MRGBA, MRGBWP and MRGRBWP color mixture options require 4 DMX addresses.
- DMX terminator is required at the end of each run to maintain data integrity. Six (6x) DMX lumenterminators included per CBX-ST. See installation instructions for details.
- 86 to 100 watts per fixture, see Power Consumption table for details.

Daisy Chain Layout (DMX/RDM)



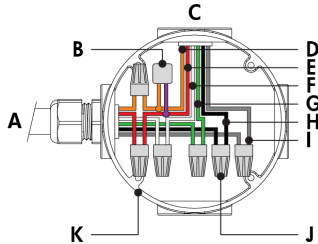
- A - DMX/RDM controller (order separately from Lumenpulse, or by others)
- B - Data input (Belden 9841 or equivalent, by others)
- C - Data output to next CBX (optional, not isolated/not boosted)
- D - CBX-DS
- E - Power input (100-277V AC, wiring by others)
- F - Power and data output to fixture (wiring by others)
- G - Junction box (by others)
- H - Power and data wiring (by others)
- I - Lumenbeam Grande

Daisy Chain Layout (DMX/RDM) - Wiring Detail (First or Middle of Run)



- A - From CBX or previous fixture
- B - To fixture
- C - Neutral
- D - Data +
- E - Data -
- F - To next fixture
- G - Signal common
- H - Line
- I - Ground
- J - Wire-nut (by others)
- K - Junction box (by others)

Daisy Chain Layout (DMX/RDM) - Wiring Detail (End of Run)



- A - From CBX or previous fixture
- B - Lumenterminator
- C - To fixture
- D - Data -
- E - Data +
- F - Neutral
- G - Ground
- H - Line
- I - Signal common
- J - Wire-nut (by others)
- K - Junction box (by others)

Maximum Fixture Count Per Run

Configuration/Voltage	120V	208V	240V	277V
LBG	10	16	18	21

Based on 15A maximum, 16AWG cable, fixtures spaced 10 ft on center, first fixture 50 ft from CBX.

- Consult CBX installation instructions for additional wiring details.
- Consult factory for specific applications and maximum fixture count/cable length recommendations.
- The DMX/RDM protocol states a maximum of 32 DMX/RDM enabled fixtures on any single run.
- Maximum of 4 DMX/RDM repeaters/CBX cascading in line.
- Maximum of 1 output per CBX-DS.
- Maximum of 3 ft cable length between fixture and next junction box for daisy chain layout.
- RGB color mixture option requires 3 DMX addresses. RGBW30K and RGBW40K, RGBA, MRGBA, MRGBWP and MRGRBWP color mixture options require 4 DMX addresses.
- DMX terminator is required at the end of each run to maintain data integrity. Two (2x) DMX lumenterminators included per CBX-DS. See installation instructions for details.
- 86 to 100 watts per fixture, see Power Consumption table for details.

How to Order

LBG	120	MRGBWP	NS	NS	
Housing	Voltage	Color and Color Temperature	Optic1	Optic2	Optical Option ⁽¹⁹⁾ ⁽²¹⁾ ⁽²²⁾
LBG Lumenbeam™ Grande	100 100 Volts 120 120 Volts 208 208 Volts 220 220 Volts 240 240 Volts 277 277 Volts	MRGBWP Opticolor+™ Mix-at-Source Red, Green, Blue Plus White, Settable Range 24K to 65K ⁽¹⁾ ⁽²⁾ ⁽³⁾ ⁽⁴⁾ ⁽⁵⁾ MRGBA Opticolor™ Mix-at-Source Red, Green, Blue, PC Amber ⁽⁶⁾ ⁽⁷⁾ RGBA Discrete Red, Green Bue, Amber RGBW30K Discrete Red, Green, Blue, White 30K ⁽⁷⁾ RGBW40K Discrete Red, Green, Blue, White 40K ⁽⁷⁾ RGB Discrete Red, Green, Blue MRGRBWP Opticolor+™ Mix-at-Source Red, Green, Royal Blue Plus White Settable Range 24K to 65K ⁽¹⁾ ⁽²⁾ ⁽³⁾ ⁽⁵⁾ ⁽⁸⁾ ⁽⁹⁾ ⁽¹⁰⁾	XN Extra Narrow 3° or 5° ⁽¹¹⁾ ⁽¹²⁾ ⁽¹³⁾ VN Very Narrow 6° ⁽¹²⁾ ⁽¹³⁾ NS Narrow Spot 10° ⁽¹²⁾ NF Narrow Flood 20° ⁽¹²⁾ M Medium 30° ⁽¹²⁾ ⁽¹⁴⁾ FL Flood 40° ⁽¹²⁾ WFL Wide Flood 60° ⁽¹²⁾ ⁽¹⁵⁾ ⁽¹⁶⁾ VWFL Very Wide Flood 90° ⁽¹²⁾ ⁽¹⁵⁾ ⁽¹⁷⁾ NAS Narrow Asymmetric ⁽¹²⁾ ⁽¹⁸⁾ WW Asymmetric Wallwash ⁽¹²⁾ ⁽¹⁸⁾	XN Extra Narrow 3° or 5° ⁽¹¹⁾ ⁽¹²⁾ ⁽¹³⁾ VN Very Narrow 6° ⁽¹²⁾ ⁽¹³⁾ NS Narrow Spot 10° ⁽¹²⁾ NF Narrow Flood 20° ⁽¹²⁾ M Medium 30° ⁽¹²⁾ ⁽¹⁴⁾ FL Flood 40° ⁽¹²⁾ WFL Wide Flood 60° ⁽¹²⁾ ⁽¹⁵⁾ ⁽¹⁶⁾ VWFL Very Wide Flood 90° ⁽¹²⁾ ⁽¹⁵⁾ ⁽¹⁷⁾ NAS Narrow Asymmetric ⁽¹²⁾ ⁽¹⁸⁾ WW Asymmetric Wallwash ⁽¹²⁾ ⁽¹⁸⁾	LSLH Linear Spread Lens Horizontal Distribution ⁽²⁰⁾ LSLV Linear Spread Lens Vertical Distribution ⁽²⁰⁾

Notes:

1. Not available with XN, VN, NAS and WW optics.

2. Consult factory for the availability of more color and CCT options.

3. Fixtures are shipped from the factory in Optidrive™ Mode. Normal Mode can be activated onsite for DMX/RDM and LT fixtures. For DMX/RDM applications, Optidrive Mode requires a LumenID, LumenID software and onsite commissioning. For LT applications, Optidrive Mode requires a LumenID, LumentalkID software and onsite commissioning. Additionally, with Opticolor+™ the white CCT is configurable in the field from 2200K-8000K.

4. Not available for LBXP HO.

5. Consult factory for DALI T8 applications with MRGBWP or MRGRBWP and a CCT other than 3000K.

6. Not available for VN, NAS and WW optics.

7. Consult factory for availability of other color options such as Royal Blue.

8. MRGBWP and MRGRBWP can be configured to MRGB via RDM, consult factory for more details.

9. Longer lead time of 10-12 weeks.

10. Consult factory for photometric performance.
11. Nominal distribution is 3° for RGBW30K, RGBW40K and RGBA color options, and 5° for RGB.

12. Factory installed, not interchangeable on site.

13. Not available with MRGBA and MRGBWP color temperature options.

14. Cannot be combined with other optics when RGB, RGBW30K, RGBW40K and RGBA color temperatures are specified.

15. Cannot be combined with other optics.

16. A dome lens accessory is available, order separately. For compatibility, a WFL optic must be specified for the fixture.

17. Available with MRGBA, MRGBWP and MRGRBWP color temperature options only.

18. Not available with MRGBA, MRGBWP and MRGRBWP color temperature options.

19. Optical options are factory installed and cannot be changed in the field.

20. Field adjustable spread lens optical accessory available, order separately.

21. Not available with WFL, NAS and WW optics when combined with RGB color temperature option.

22. Not available with VN, WFL, VWFL, NAS and WW optics when combined with MRGBA or MRGBWP color temperature options.

How to Order

Unselected	DMX/RDM	3GV	UL	Unselected	Unselected	
Finish	Control	Option	Certification	Cable Length ⁽²⁹⁾ ⁽³⁵⁾	Cable Color	Buy American Act
BK Black Sandtex® BRZ Bronze Sandtex® SI Silver Sandtex® WH Smooth White BKTX Textured Black BRZTX Textured Bronze Non-Metallic GRATX Textured Medium Gray GRNTX Textured Green WHTX Textured White CC Custom Color & Finish ⁽²³⁾ ⁽²⁴⁾ ⁽²⁵⁾	LT Lumentalk ⁽²⁶⁾ ⁽²⁷⁾ DMX/RDM DMX/RDM Enabled Dimming ⁽²⁸⁾ ⁽²⁹⁾ DALI T8 DALI 2 T8 Enabled Dimming 0.1% ⁽⁵⁾ ⁽³⁰⁾	SY Short Yoke SRY Short Rotational Yoke ⁽³¹⁾ RY Rotational Yoke ⁽³¹⁾ 3GV 3G ANSI C136.31-2010 Vibration Rating for Bridge Applications CRC Corrosion-Resistant Coating ⁽³²⁾ ⁽³³⁾	UL UL Compliant CE CE Compliant ⁽³⁴⁾ CEII CE Compliant Class II Double Insulated ⁽³⁴⁾	3FT 3 ft ⁽²⁹⁾ ⁽³⁵⁾ 10FT 10 ft 20FT 20 ft 30FT 30 ft 50FT 50 ft 70FT 70 ft 100FT 100 ft	BK Black WH White ⁽³⁶⁾	BAA Buy American ⁽³⁶⁾ ⁽³⁷⁾

Notes:

5. Consult factory for DALI T8 applications with MRGBWP or MRGRBWP and a CCT other than 3000K.

23. Lumenpulse offers a wide selection of RAL CLASSIC (K7) colors with a smooth texture and high-gloss finish. Please consult factory for a list of available K7 colors, other RAL textures and glosses, or to match alternate color charts. Final color matching results may vary.

24. Setup charges apply for RAL colors. Consult factory for details.

25. Longer lead times can be expected for custom RAL color finishes.

26. A Lumentranslator 2 (LTL2) and LumenID (LID) must be specified for Lumentalk applications. Consult Lumentranslator 2 and Lumentalk pages and specification sheets for details.

27. Not available with Class II double insulated option.

28. A control box (CBX) and LumenID (LID) must be specified.
29. Maximum of 3 ft cable length for daisy chain DMX applications with CBX-DS.

30. DALI 2 T8 controller required, provided by others. DALI 2 T8 control uses a single DALI short address.

31. Consult factory for applications with 3GV requirements.

32. Use only when exposed to salt spray. This option is not required for normal outdoor exposure.

33. Setup charges apply. Consult factory for details.

34. Consult European specification sheets and installation instructions for CE and CE Class II wiring information.

35. 3 ft cable length is standard unless otherwise specified.

36. Not available with CE or CEII certification options.

37. Contact your Lumenpulse Sales Representative for more information on order volume details.