

Project Name

Bennett Bridge

Type

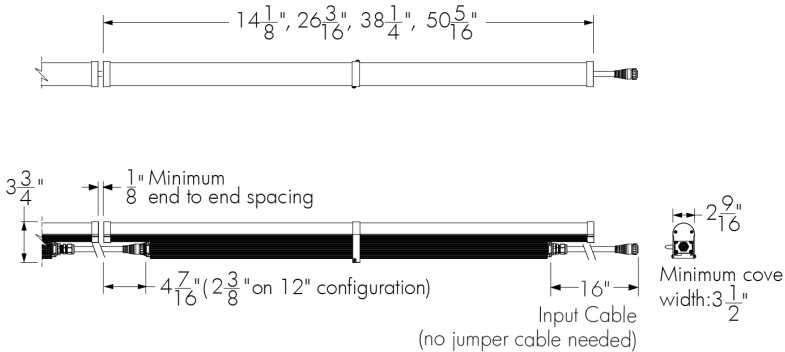
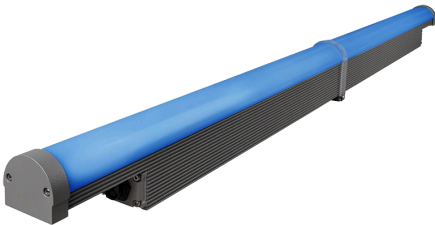
O2-L1

Catalog / Part Number

LXTD 120 12 RGBW30K DMX/RDM 3GV

Qty

78



Front and side views

Photometric Summary

1ft fixture [305mm]		
	Delivered output (lm)	Power (W)
RGB	84	6
RGBW30K	83	5
RGBW40K	85	5
RGBA	61	5
2ft fixture [610mm]		
RGB	168	12
RGBW30K	166	10
RGBW40K	170	10
RGBA	121	10
3ft fixture [914mm]		
RGB	252	18
RGBW30K	249	15
RGBW40K	254	15
RGBA	182	15
4ft fixture [1219mm]		
RGB	336	24
RGBW30K	332	20
RGBW40K	339	20
RGBA	243	20

<sup>1</sup> Based on full output, DMX/RDM configuration.  
<sup>2</sup> Photometric performance is measured in compliance with IESNA LM-79-24.

Description

The Lumencove XT Direct View Colour Changing is a system of direct view linear LED luminaires for media façades and delineation of large-scale structures such as bridges and towers. IP66-rated for sustained outdoor use, Lumencove XT Colour Changing luminaires can be arranged in patterns or in long continuous lines of light. The luminaires use tri-colour LEDs in a single package, premixing colours to avoid striations and shadows. A domed acrylic diffuser lens produces perfectly uniform and saturated light that can be controlled with up to 12 in resolution for sophisticated low-resolution video effects in colour. Available with a choice of lengths, finishes, and mounting options, as well as Legacy or Custom output modes.

Features

Color and Color Temperature	Additive RGB Regular Output Additive RGB + 3000K Additive RGB + 4000K Additive RGB + amber
Length (Nominal)	12 in, 24 in, 36 in, 48 in
Optics	Direct view
Option	Corrosion-Resistant Coating for Hostile Environments 3G ANSI C136.31-2010 Vibration Rating for Bridge Applications CE (certification covers European Economic Area) Clear end caps
Power Consumption	5 W/ft RGBW30K, RGBW40K and RGBA versions, 6 W/ft RGB version
Warranty	5-year limited warranty

Average Illuminance

Average Illuminance			
Angle	0° (Cd/m²)	45° (Cd/m²)	90° (Cd/m²)
45°	1129	965	971
55°	1066	915	947
65°	951	878	942
75°	737	868	968
85°	253	932	1,045

<sup>1</sup> Based on 4 ft fixture, RGBW40K full output, DMX/RDM configuration.  
<sup>2</sup> Photometric performance is measured in compliance with IESNA LM-79-24.

Optics



Direct View

Color and Color Temperature

Additive RGB 6 W/ft	Additive RGB + 3000K 5 W/ft	Additive RGB + 4000K 5 W/ft	Additive RGB + amber 5 W/ft

Control



Rating

IP66

Certifications



Performance

Maximum Delivered Output	336 lm (48 in fixture, RGB full output, DMX/RDM) 332 lm (48 in fixture, RGBW30K full output, DMX/RDM) 339 lm (48 in fixture, RGBW40K full output, DMX/RDM) 243 lm (48 in fixture, RGBA full output, DMX/RDM)
--------------------------	---

Lumen Maintenance	L70 88,000 hrs (Ta 25 °C and Ta 40 °C) L95 72,000 hrs (Ta 25 °C and Ta 40 °C)
-------------------	--

Physical

Housing Material	Low copper content extruded aluminum
Lens Material	Tempered glass lens combined with extruded acrylic UV and impact resistant opal diffuser
Hardware Material	Stainless steel
End Cap Material	Aluminum, Acrylic (CEC option only)
Gasket Material	Silicone
Surface Finish	Electrostatically applied polyester powder coat
Weight	12 in: 3.7 lbs, 24 in: 5.6 lbs, 36 in: 8.8 lbs, 48 in: 10.8 lbs

Electrical and Control

Maximum Cable and Fixture Run Length	Up to 170 ft (DMX/RDM, 240-277V, RGB version), Up to 128 ft (DMX/RDM, 120-277V, RGBW30K and RGBW40K versions)
Fixture Cable	Power and data in one cable, End-to-end standard configuration: 16 in black input cable (no jumper cable needed)
Leader Cable Conductor	5C #16-5
Fixture Cable and Connector Color	Black cable (black connector) or white cable (black connector) for leader and jumper cables
Control	Lumentalk, DMX/RDM Enabled, DALI 2 T8 Enabled Dimming 0.1%
Resolution (DMX/RDM)	Per foot or per fixture (configured with LumenID V3 software), 8-bit or 16-bit
RGB Color Mixing	18 LEDs per 12 in (tri-color LEDs)
RGBW30K Color Mixing	36 LEDs per 12 in (18x tri-color LEDs, 18x 3000K LEDs)
RGBW40K Color Mixing	36 LEDs per 12 in (18x tri-color LEDs, 18x 4000K LEDs)
RGBA Color Mixing	36 LEDs per 12 in (18x tri-color LEDs, 18x amber LEDs)
Environmental	
Storage Temperature	-40 °F to 122 °F (device must reach start-up temperature value before operating)
Start-up Temperature	-13 °F to 122 °F
Operating Temperature	-13 °F to 122 °F
Environment	Dry/damp/wet location
Ingress Protection Rating	IP66 Wet location rated

Impact Resistance Rating	IK10
Accessories (Order Separately)	
Cables	Leader Cable, Jumper Cable
Control Boxes	DMX/RDM enabled (Daisy Chain or Star Configuration), Ethernet enabled (Daisy Chain or Star Configuration)
Control Systems	Lumenscene™ (LSC), Pharos® Designer Lighting Control Kit (PHAROS), Pharos® Expert Control Kit (EXPERT)
Diagnostic and Addressing Tools	LumenID (LID)

Important

Virtual Patent Marking Notice

This website (<https://www.lmpg.com/patents-trademarks>) is provided to satisfy the virtual patent marking provisions of applicable jurisdictions. Some products listed may be covered by additional patents not referenced here.

How to Order

LXTD	120	12	RGBW30K	Unselected	Unselected	DMX/RDM	3GV	
Housing	Voltage	Length	Color and Color Temperature	Mounting Options	Finish	Control	Option	Buy American Act
LXTD Lumencove® XT Direct View	120 120 Volts  208 208 Volts  220 220 Volts  240 240 Volts  277 277 Volts	12 14 1/8 in (3.7 lbs) <sup>(1)</sup>  24 26 3/16 in (5.6 lbs)  36 38 1/4 in (8.8 lbs)  48 50 5/16 in (10.8 lbs)	RGB Additive RGB 6 W/ft  RGBW30K Additive RGB + 3000K, 5 W/ft  RGBW40K Additive RGB + 4000K, 5 W/ft  RGBA Additive RGB + amber 5 W/ft	UMP Fixed Mounting <sup>(2)</sup>  UMAS Universal Adjustable Mounting <sup>(2)</sup>  WAM2 Adjustable Wall Mounting 2 in  WAM6 Adjustable Extended Arm Mounting 6 in  WAM12 Adjustable Extended Arm Mounting 12 in	BK Black Sandtex®  BRZ Bronze Sandtex®  SI Silver Sandtex®  WH Smooth White  CC Custom Color & Finish <sup>(3)</sup> <sup>(4)</sup> <sup>(5)</sup>	LT Lumentalk <sup>(1)</sup> <sup>(6)</sup> <sup>(7)</sup>  DMX/RDM DMX/RDM Enabled Dimming <sup>(8)</sup>  DALI8 DALI 2 T8 Enabled Dimming 0.1% <sup>(9)</sup>	CRC Corrosion-Resistant Coating <sup>(10)</sup> <sup>(11)</sup>  3GV 3G ANSI C136.31-2010 Vibration Rating for Bridge Applications <sup>(12)</sup>  CE CE (European certification)  CEC Clear end caps	BAA Buy American <sup>(13)</sup> <sup>(14)</sup>

Notes:

1. To connect 12 in fixture lengths to the Lumentalk system, DMX/RDM must be specified as the control option, and a Lumentalk Data Bridge (LD8-DMX) is required. See the typical wiring diagrams in the specification sheet for details.

2. Suitable to use when 3GV option is specified.

3. Lumenpulse offers a wide selection of RAL CLASSIC (K7) colors with a smooth texture and high-gloss finish. Please consult factory for a list of available K7 colors, other RAL textures and glosses, or to match alternate color charts. Final color matching results may vary.

4. Setup charges apply for RAL colors. Consult factory for details.

5. Longer lead times can be expected for custom RAL color finishes.

6. Available for 24 in, 36 in and 48 in fixture lengths only.
7. A Lumentranslator 2 (LTL2) and LumenID (LID) must be specified for Lumentalk applications. Consult Lumentranslator 2 and Lumentalk pages and specification sheets for details.

8. A control box (CBX) and LumenID (LID) must be specified.

9. DALI 2 T8 controller required, provided by others. DALI 2 T8 control uses a single DALI short address.

10. Use only when exposed to salt spray. This option is not required for normal outdoor exposure.

11. Setup charges apply. Consult factory for details.

12. Available with UMP and UMAS mounting options only.

13. Not available with CE certification option.

14. Contact your Lumenpulse Sales Representative for more information on order volume details.